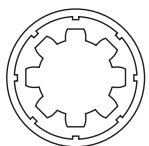


Belt Drive Actuators

M Series

H Series

Gantry Styles

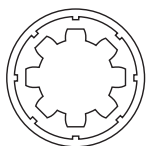


MYOSTAT MOTION CONTROL INC.

www.myostat.ca
info@myostat.ca
+1 905 836 4441

Belt Drive Actuators

M40-06 Series

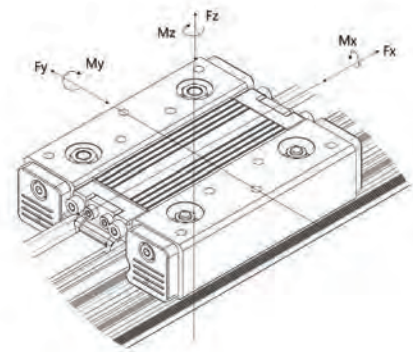


MYOSTAT MOTION CONTROL INC.

www.myostat.ca
info@myostat.ca
+1 905 836 4441

Technical Data				
	Unit		Value	
Max. Speed	m/s	ft/s	4	13.12
Max. Acceleration	m/s ²	ft/s ²	15	49.21
Nominal Input Torque	Nm	ft-lb	2.3	1.7
Positional Repeatability	+/- mm	+/- Inch	0.05	0.002
Pitch	mm	Inch	75	2.953
Belt Width	mm	Inch	15	0.591
Toothed Belt	HTD3M			
Max. Belt Expansion	%		0.18	
Toothed Belt Tension			150	33.72
Fx Max.	N	lbf	100	22.48
Fy Max.			50	11.24
Fz Max.			60	13.49
Mx Max.			3	2.21
My (standard)	Nm	ft-lb	5	3.69
Mz (standard)			4	2.95
Mass for first meter	Kg	lb	2.2	4.84
Mass per additional meter			1.9	4.18

RL - Rail Length	300 - 3600 [11.811-141.732]
L - Overall Length	RL +106 [4.173]
S - Stroke	RL - (100 [3.937] x Number of Carriages)

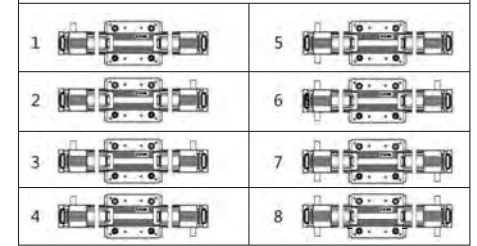


Naming Convention

M40-06-□-□-□□□□

Frame Size Fz Max. Number of Carriages Shaft Position Stroke

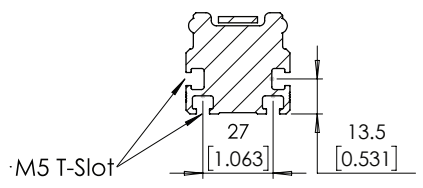
Shaft Position



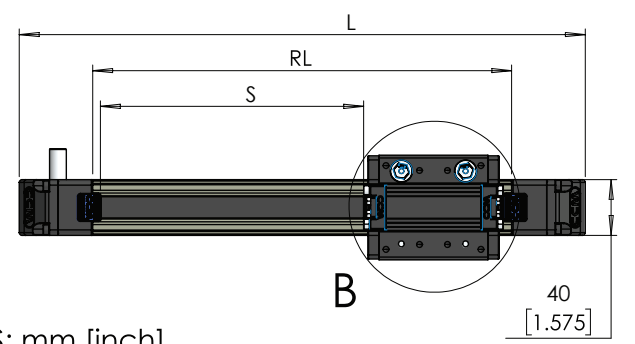
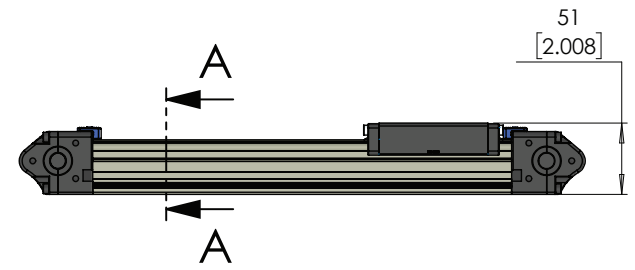
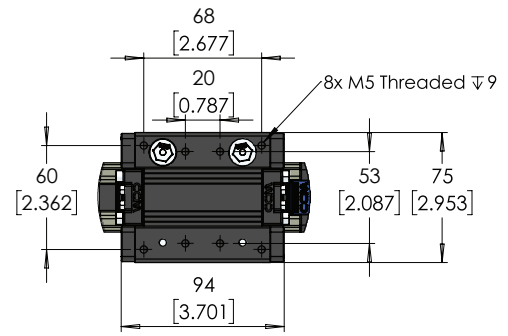
Available with Inline Motor Mount or 2.5:1 or 2:1 belt reduction



SECTION A-A



DETAIL B



UNITS: mm [inch]

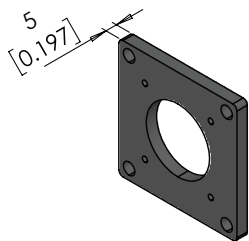
Unless otherwise specified, tolerance to be: CNS 4018 IT 14 Linear measures
0.5-3 ±0.1
3-6 ±0.1
6-30 ±0.2
30-120 ±0.3
120-315 ±0.5

DRAWN	M.Reynolds	04-10-2018
CHECKED	M.Dank	04-10-2018
ENG APPR.	M.Dank	04-10-2018

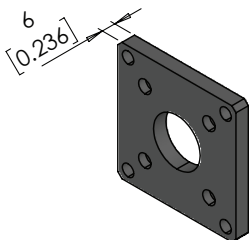
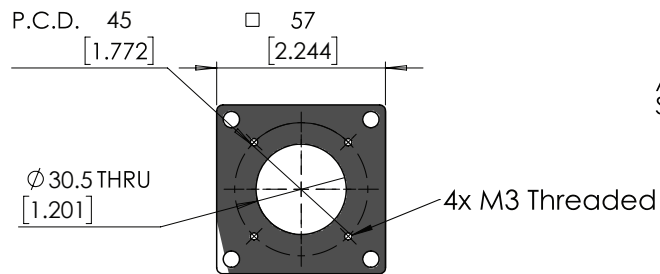


DO NOT SCALE DRAWING		DIMENSIONS ARE METRIC	
TITLE: M40-06 Series Belt Driven Actuator			
PRT. NO. M40-06-□-□-□□□□		REV 2.1	
WEIGHT: -		SHEET 1 OF 3	

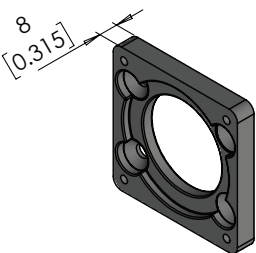
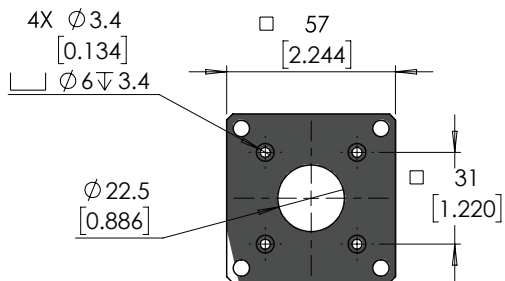
PROPRIETARY AND CONFIDENTIAL THE INFORMATION CONTAINED IN THIS DRAWING IS THE SOLE PROPERTY OF MYOSTAT MOTION CONTROL INC. ANY REPRODUCTION IN PART OR AS A WHOLE WITHOUT THE WRITTEN PERMISSION OF MYOSTAT MOTION CONTROL INC.



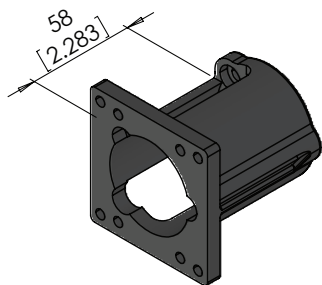
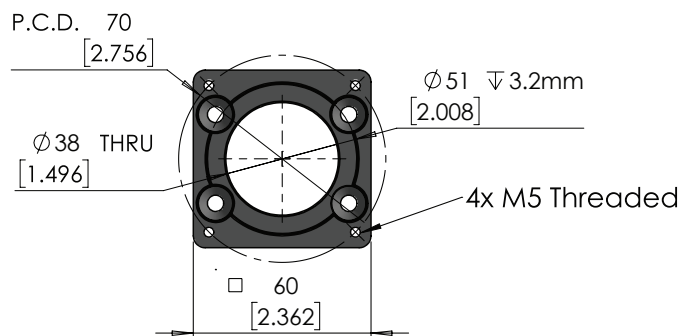
M4045-01917
40 mm Servo Motor Adapter



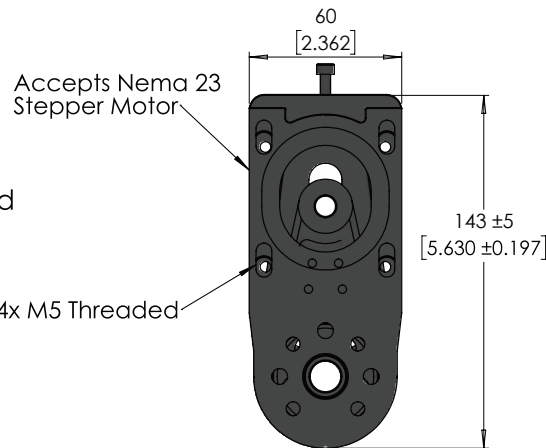
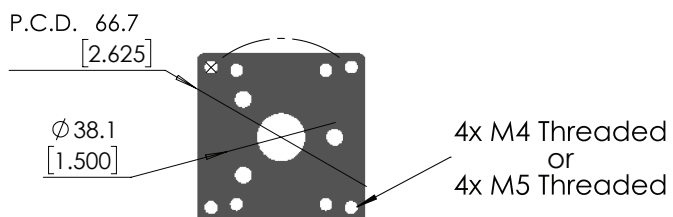
M4045-17000
Nema 17 Motor Adapter



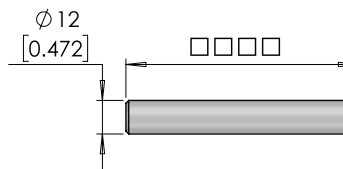
M4045-01917
60 mm Servo Motor Adapter



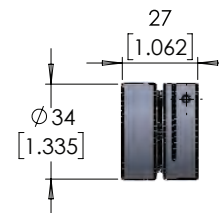
M4045-M23-M4
M4045-M23-M5
Nema 23 In-line Motor Bracket



SR1-2
SR1-2.5
Belt Reduction Available in 2:1 and 2.5:1




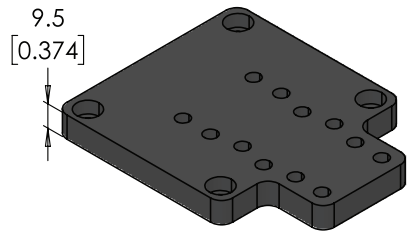
SFT-12-□□□□
12mm Shaft Variable Length



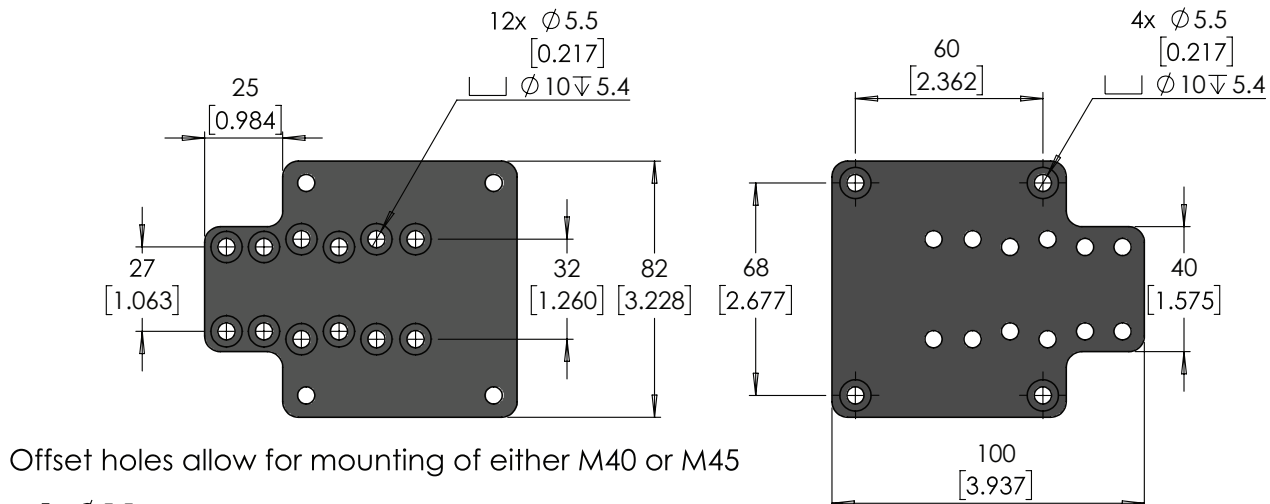
PML34-12-□□
12 mm Coupling with Variable Input

UNITS: mm [inch]

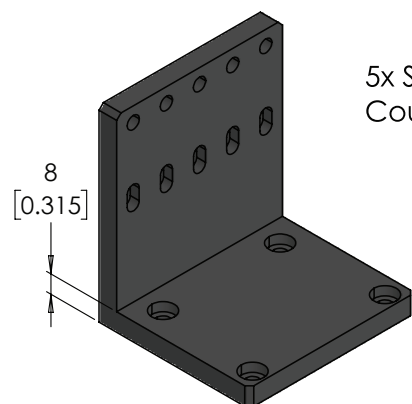
Unless otherwise specified, tolerance to be: CNS 4018 IT 14 Linear measures 0.5-3 ± 0.1 3-6 ± 0.1 6-30 ± 0.2 30-120 ± 0.3 120-315 ± 0.5	DRAWN	M.Reynolds	04-10-2018	DO NOT SCALE DRAWING DIMENSIONS ARE METRIC	TITLE: <h1>M40-06 Accessories</h1>
	CHECKED	M.Dank	04-10-2018		
PROPRIETARY AND CONFIDENTIAL THE INFORMATION CONTAINED IN THIS DRAWING IS THE SOLE PROPERTY OF MYOSTAT MOTION CONTROL INC. ANY REPRODUCTION IN PART OR AS A WHOLE WITHOUT THE WRITTEN PERMISSION OF Myostat Motion Control Inc.				PRT. NO. M40-06-□-□-□□□□	
 Myostat Motion Control Inc. +1 905-856-4441 www.myostat.ca				REV 2.1	
				WEIGHT: -	SHEET 1 OF 3



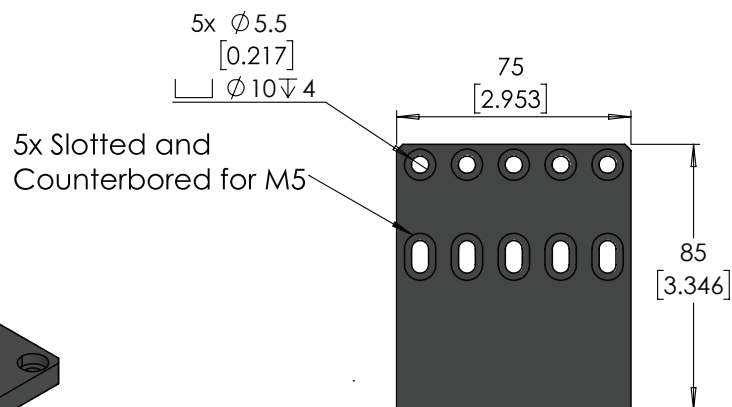
M40-T-Mount
2 Axis Mounting Bracket



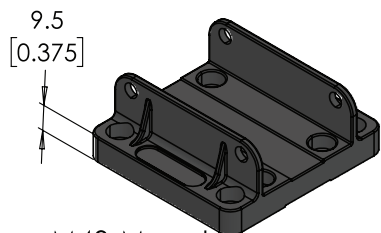
Offset holes allow for mounting of either M40 or M45



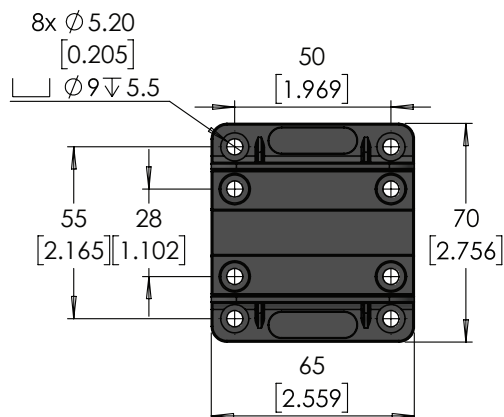
M40-RA-Mount
Right Angle Rail Mount




Slots allow for mounting of either M40 or M45



M40-Mount
M40 Rail Mount

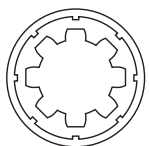


UNITS: mm [inch]

DRAWN		NAME	DATE	DO NOT SCALE DRAWING	DIMENSIONS ARE METRIC
M.Reynolds		M.Reynolds	04-10-2018	TITLE: M40-06 Series Belt Driven Actuator	REV 2.1
CHECKED		M.Dank	04-10-2018		
ENG APPR.		M.Dank	04-10-2018		
PROPRIETARY AND CONFIDENTIAL THE INFORMATION CONTAINED IN THIS DRAWING IS THE SOLE PROPERTY OF MYOSTAT MOTION CONTROL INC. ANY REPRODUCTION IN PART OR AS A WHOLE WITHOUT THE WRITTEN PERMISSION OF Myostat Motion Control Inc.		 Myostat Motion Control Inc. +1 905-856-4441 www.myostat.ca		PRT. NO. M40-06-□-□-□□□□	WEIGHT: -
				SHEET 1 OF 3	

Belt Drive Actuators

M45-15 Series

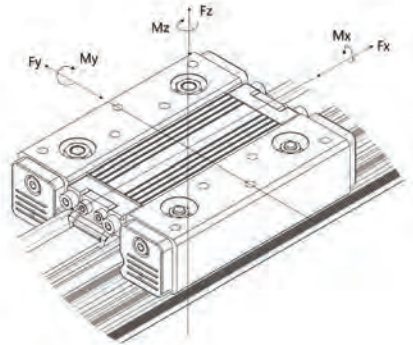


MYOSTAT MOTION CONTROL INC.

www.myostat.ca
info@myostat.ca
+1 905 836 4441

Technical Data				
	Unit		Value	
Max. Speed	m/s	ft/s	4	13.12
Max. Acceleration	m/s ²	ft/s ²	15	49.21
Nominal Input Torque	Nm	ft-lb	3	2.21
Positional Repeatability	+/- mm	+/- Inch	0.05	0.002
	Pitch		75	2.953
Belt Width	mm	Inch	15	0.591
Toothed Belt	HTD3M			
Max. Belt Expansion	%		0.18	
Toothed Belt Tension			150	33.72
Fx Max.	N	lbf	150	33.72
Fy Max.			110	24.73
Fz Max.			150	33.72
Mx Max.	Nm	ft-lb	5	3.69
My (standard)			8	5.9
Mz (standard)			6	4.43
Mass for first meter	Kg	lb	2.6	5.72
Mass per additional meter			2.3	5.06

Variable Dimensions	
RL - Rail Length	300 - 3600 [11.811-141.732]
L - Overall Length	RL +106 [4.173]
S - Stroke	RL - (115.5 [4.572] x Number of Carriages)



Naming Convention

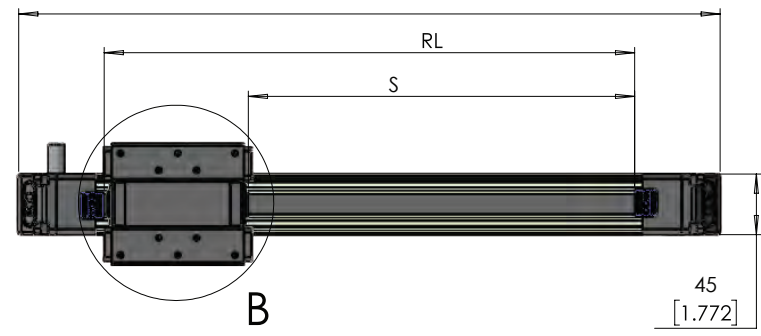
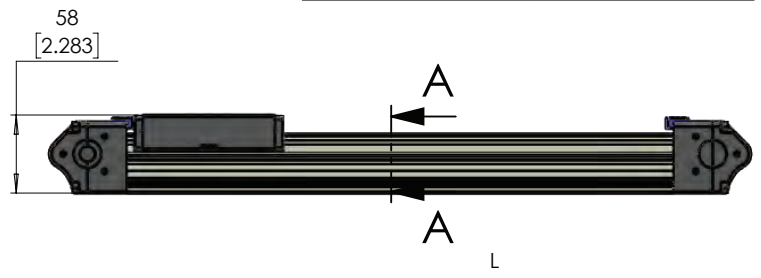
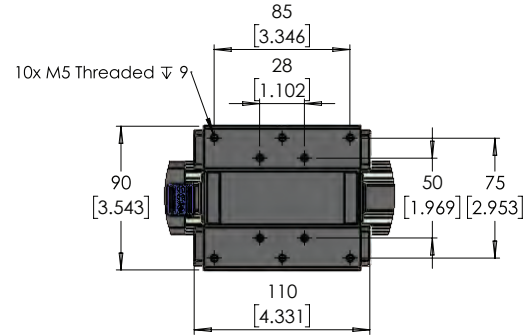
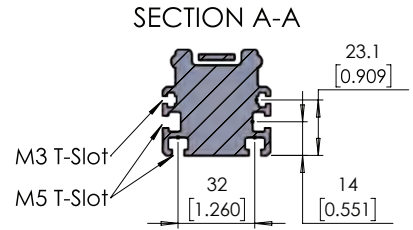
M45-15-□-□-□□□□

Frame Size Fz Max. Number of Carriages Shaft Position Stroke

Shaft Position	
1	5
2	6
3	7
4	8



Available with Inline Motor Mount or 2.5:1 or 2:1 belt reduction



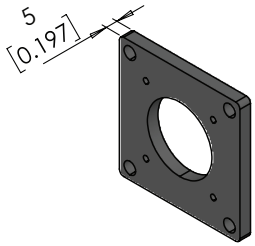
Unless otherwise specified, tolerance to be: CNS 4018 IT 14 Linear measures
 0.5-3 ±0.1
 3-6 ±0.1
 6-30 ±0.2
 30-120 ±0.3
 120-315 ±0.5

PROPRIETARY AND CONFIDENTIAL
 THE INFORMATION CONTAINED IN THIS DRAWING IS THE SOLE PROPERTY OF MYOSTAT MOTION CONTROL INC. ANY REPRODUCTION IN PART OR AS A WHOLE WITHOUT THE WRITTEN PERMISSION OF Myostat Motion Control Inc.

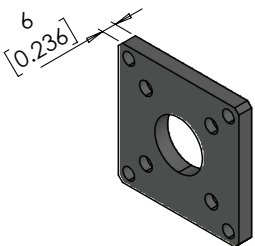
	NAME	DATE	DO NOT SCALE DRAWING	DIMENSIONS ARE METRIC
DRAWN	M.Reynolds	04-10-2018	TITLE:	M45-15 Series Belt Driven Actuator
CHECKED	M.Dank	04-10-2018		
ENG APPR.	M.Dank	04-10-2018		



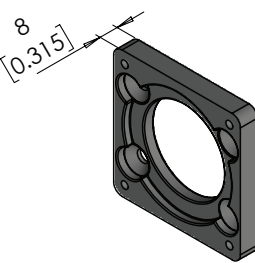
PRT. NO.	REV
M45-15-□-□-□□□□	2.1



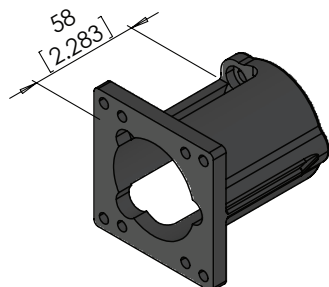
M4045-01917
40 mm Servo Motor Adapter



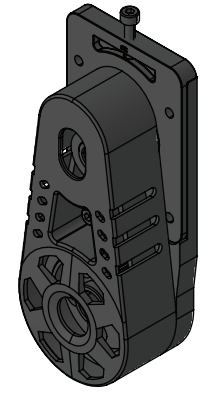
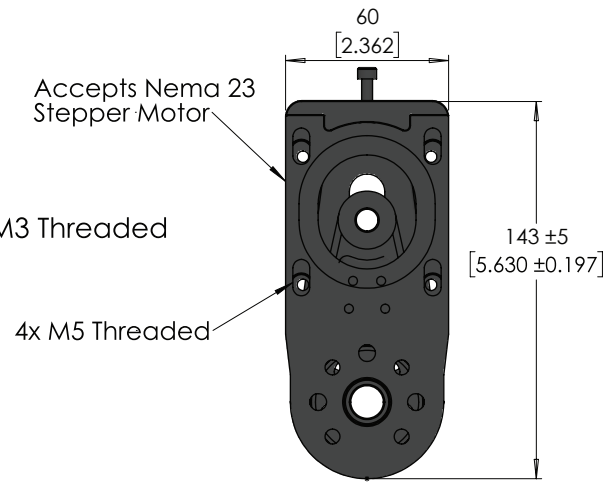
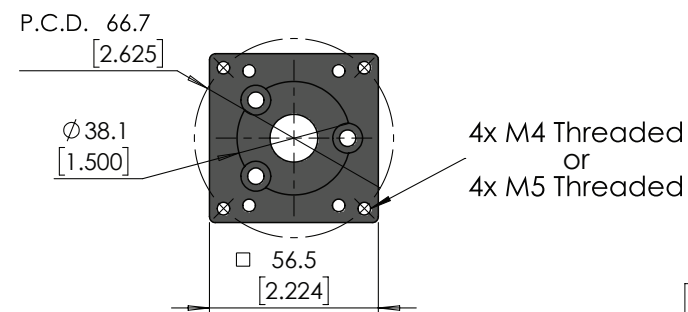
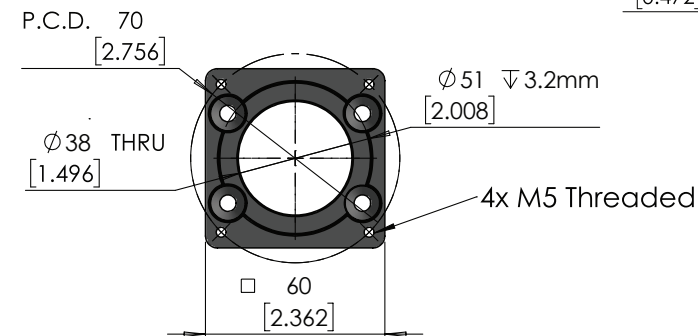
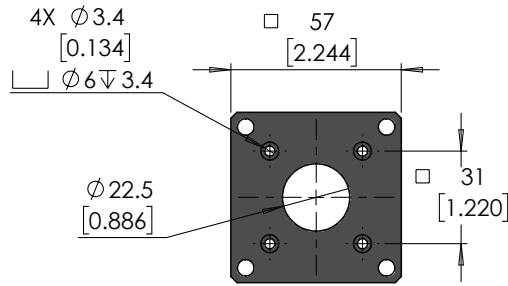
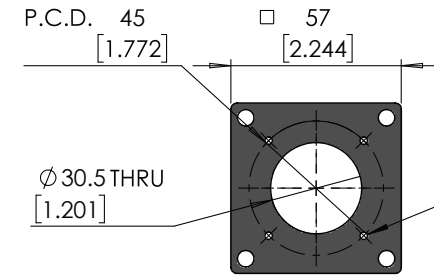
M4045-17000
Nema 17 Motor Adapter



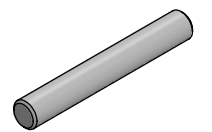
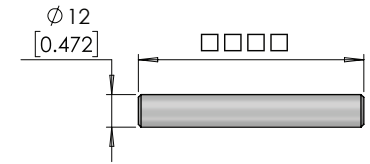
M4045-01917
60 mm Servo Motor Adapter



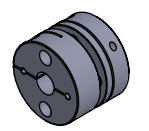
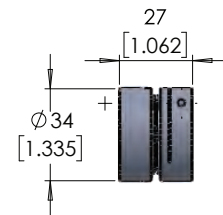
M4045-M23-M4
M4045-M23-M5
Nema 23 Inline Motor Bracket



SR1-2
SR1-2.5
Belt Reduction Available in 2:1 and 2.5:1



SFT-12-□□□□
12mm Shaft Variable Length



PML34-12-□□
12 mm Coupling with Variable Input

UNITS: mm [inch]

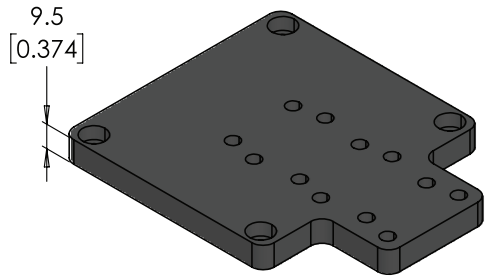
Unless otherwise specified, tolerance to be: CNS 4018 IT 14 Linear measures	
0.5-3	±0.1
3-6	±0.1
6-30	±0.2
30-120	±0.3
120-315	±0.5

	NAME	DATE	DO NOT SCALE DRAWING	DIMENSIONS ARE METRIC
DRAWN	M.Reynolds	04-10-2018	TITLE: M45-15 Accessories	
CHECKED	M.Dank	04-10-2018		
ENG APPR.	M.Dank	04-10-2018		

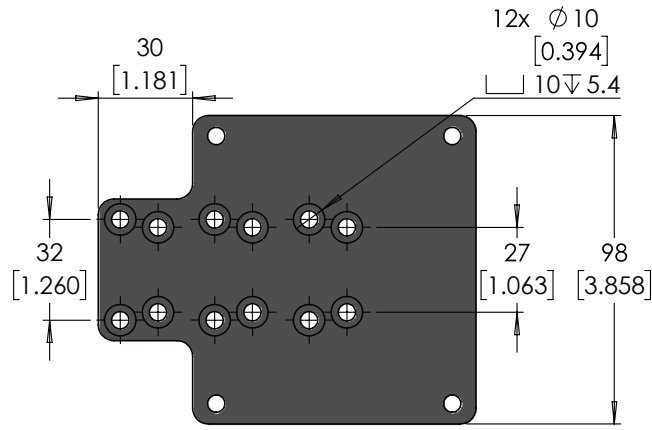


PRT. NO.	REV
M45-15-□-□-□-□-□	2.2

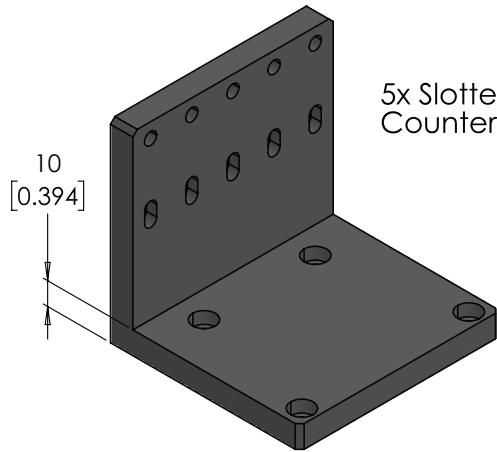
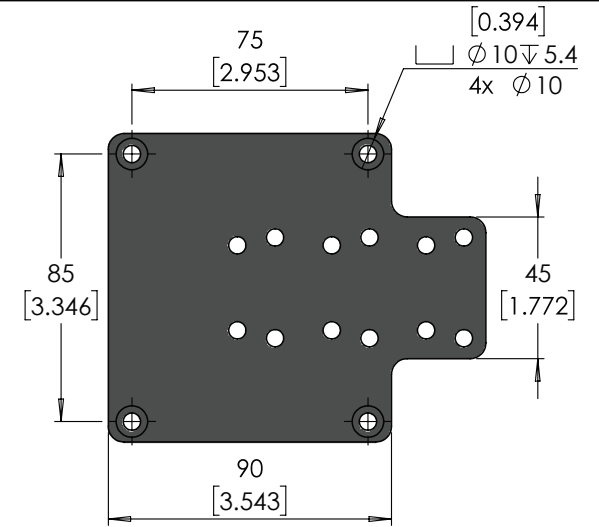
PROPRIETARY AND CONFIDENTIAL
THE INFORMATION CONTAINED IN THIS
DRAWING IS THE SOLE PROPERTY OF
MYOSTAT MOTION CONTROL INC.
ANY REPRODUCTION IN PART OR AS A
WHOLE WITHOUT THE WRITTEN PERMISSION
OF Myostat Motion Control Inc.



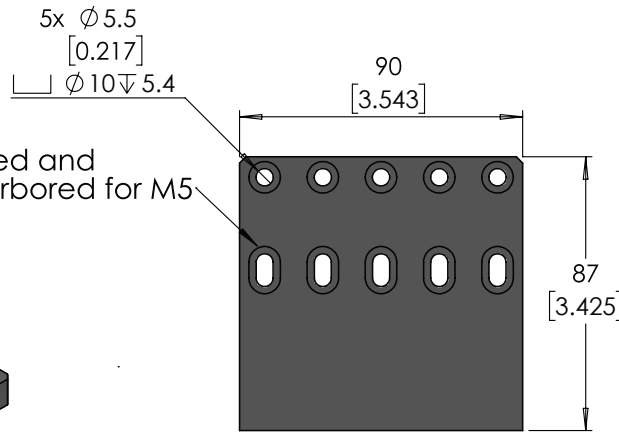
M45-T-Mount
2 Axis Mounting Bracket



Offset holes allow for mounting of either M40 or M45

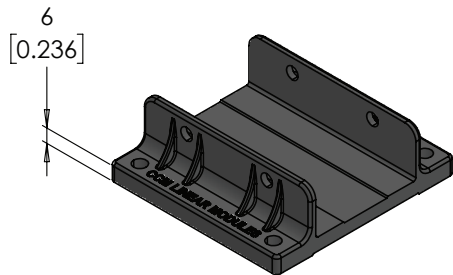
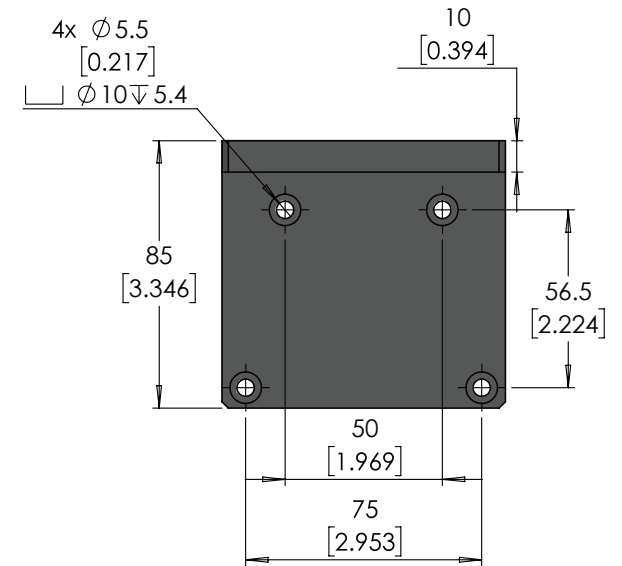


M45-RA-Mount
Right Angle Rail Mount

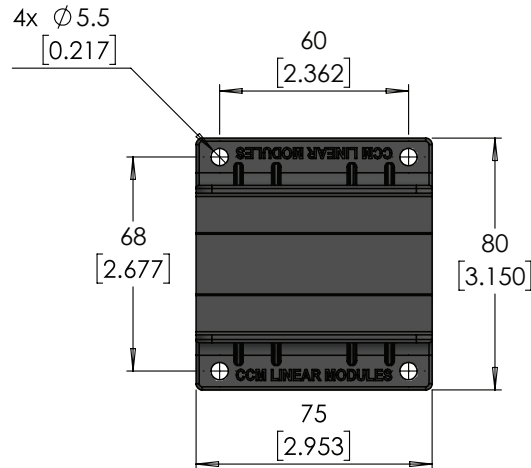


5x Slotted and Counterbored for M5


Slots allow for mounting of either M40 or M45



M45-Mount
M45 Rail Mount

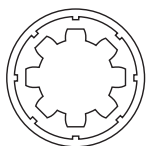


UNITS: mm [inch]

Unless otherwise specified, tolerance to be: CNS 4018 IT 14 Linear measures 0.5-3 ±0.1 3-6 ±0.1 6-30 ±0.2 30-120 ±0.3 120-315 ±0.5	NAME	DATE	DO NOT SCALE DRAWING	DIMENSIONS ARE METRIC
	DRAWN	M.Reynolds	04-10-2018	TITLE: M45 Mounting Options
CHECKED	M.Dank	04-10-2018	PRT. NO. M45-15-□-□-□□□□	
ENG APPR.	M.Dank	04-10-2018	REV 2.2	
PROPRIETARY AND CONFIDENTIAL THE INFORMATION CONTAINED IN THIS DRAWING IS THE SOLE PROPERTY OF MYOSTAT MOTION CONTROL INC. ANY REPRODUCTION IN PART OR AS A WHOLE WITHOUT THE WRITTEN PERMISSION OF Myostat Motion Control Inc.		 Myostat Motion Control Inc. +1 905-856-4441 www.myostat.ca		

Belt Drive Actuators

M50-25 Series

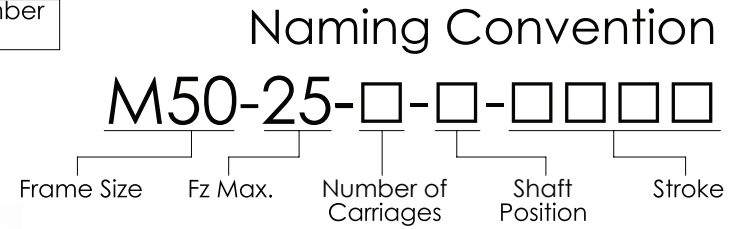
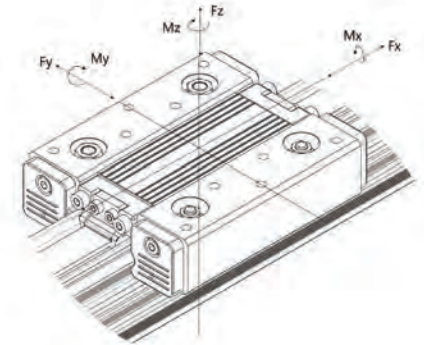


MYOSTAT MOTION CONTROL INC.

www.myostat.ca
info@myostat.ca
+1 905 836 4441

Technical Data				
	Unit		Value	
Max. Speed	m/s	ft/s	4	13.12
Max. Acceleration	m/s ²	ft/s ²	15	49.21
Nominal Input Torque	Nm	ft-lb	5	3.69
Positional Repeatability	+/- mm	+/- Inch	0.05	0.002
	Pitch		95	3.740
Belt Width	mm	Inch	20	0.787
Toothed Belt	STD5M			
Max. Belt Expansion	%		0.18	
Toothed Belt Tension	N	lbf	300	67.44
			Fx Max.	250
Fy Max.			185	41.59
Fz Max.			250	56.2
Mx Max.			8	5.9
My (standard)	Nm	ft-lb	12	8.85
Mz (standard)			10	7.38
Mass for first meter	Kg	lb	3.8	8.36
Mass per additional meter			3.2	7.04

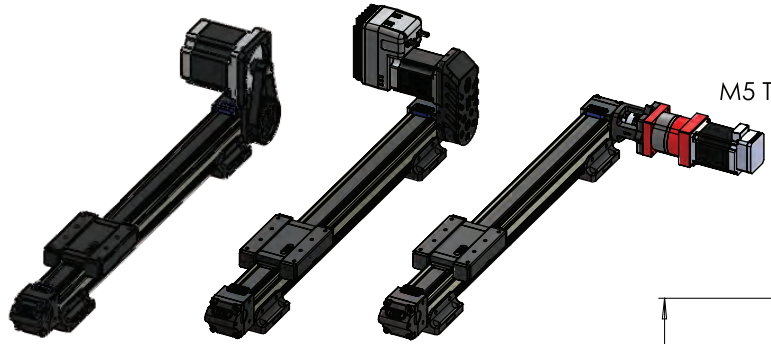
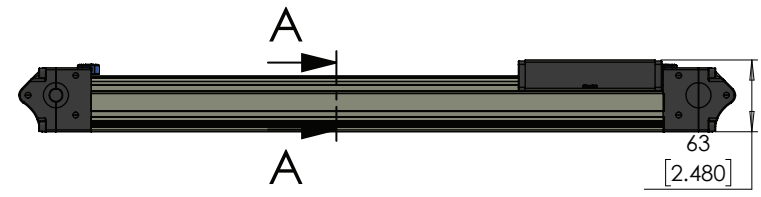
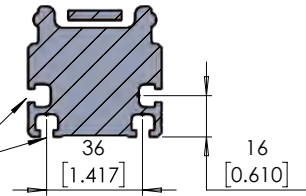
Variable Dimensions	
RL - Rail Length	350 - 3600 [13.780-141.732]
L - Overall Length	RL + 133.78 [5.267]
S - Stroke	RL - (126 [4.961] x Number of Carriages)



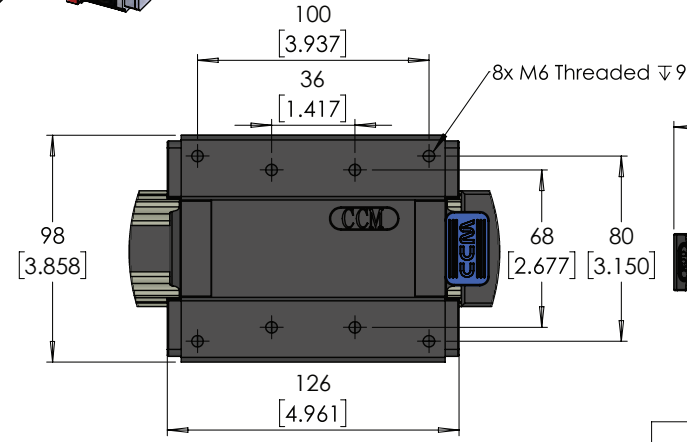
Shaft Position

1	2	3	4	5	6	7	8
---	---	---	---	---	---	---	---

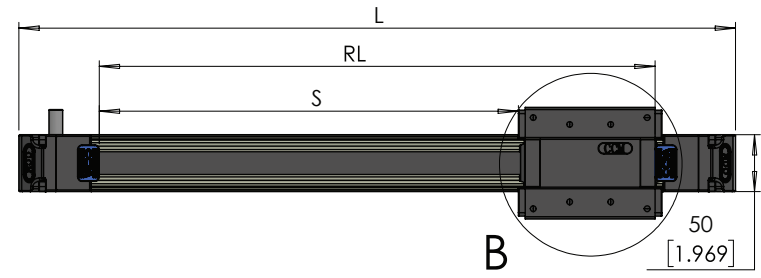
SECTION A-A



Available with Inline Motor Mount, SX Gearbox and 23L20C, 2:1 Belt Reduction or 5:1 Belt Reduction



DETAIL B



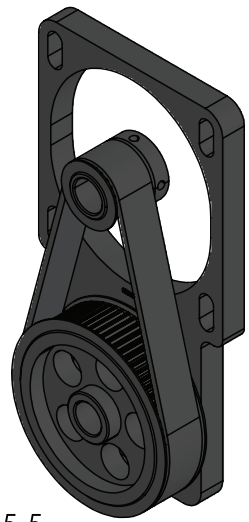
Unless otherwise specified, tolerance to be: CNS 4018 IT 14 Linear measures
0.5-3 ±0.1
3-6 ±0.1
6-30 ±0.2
30-120 ±0.3
120-315 ±0.5

	NAME	DATE	DO NOT SCALE DRAWING	DIMENSIONS ARE METRIC
DRAWN	M.Reynolds	04-10-2018	TITLE: M50-25 Series Belt Driven Actuator	REV 2.2
CHECKED	M.Dank	04-10-2018		
ENG APPR.	M.Dank	04-10-2018		

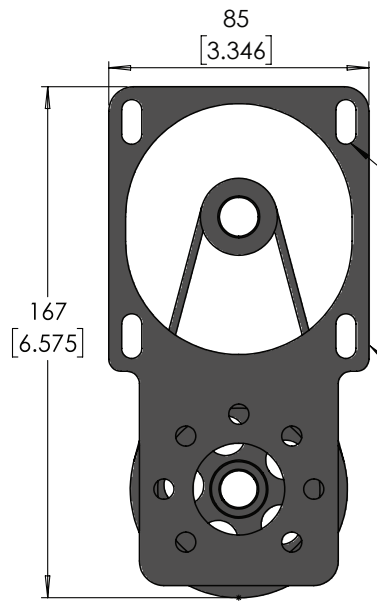


PROPRIETARY AND CONFIDENTIAL
THE INFORMATION CONTAINED IN THIS DRAWING IS THE SOLE PROPERTY OF MYOSTAT MOTION CONTROL INC. ANY REPRODUCTION IN PART OR AS A WHOLE WITHOUT THE WRITTEN PERMISSION OF MYOSTAT MOTION CONTROL INC.

PRT. NO.	M50-25-□-□-□□□□
----------	-----------------



SR5-5
Belt Reduction Available in 5:1

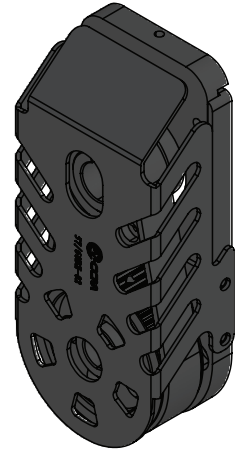
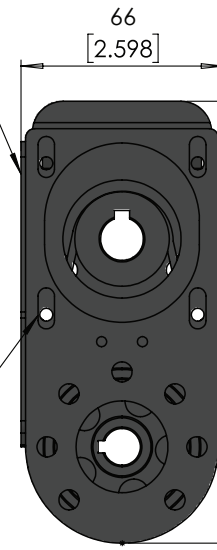


Accepts 60mm Servo Motor with 14mm shaft

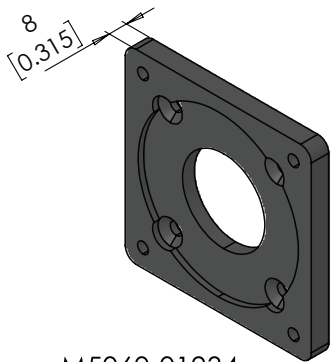
Slotted for Tensioning

Accepts NEMA 34 Motor with 1/2" shaft

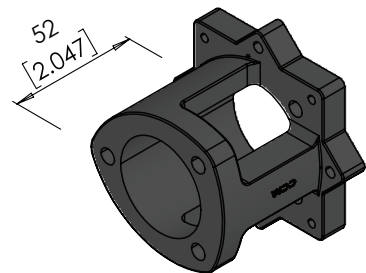
4x M5 Threaded



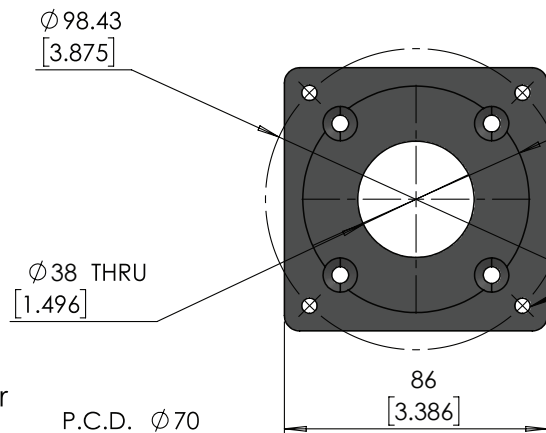
SR2-2
Belt Reduction Available int 2:1



M5060-01934
34 Stepper Motor Adapter

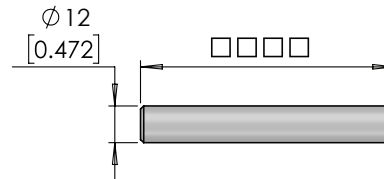


M5060-M23-M4
M5060-M23-M5
Nema 23 Inline Motor Bracket

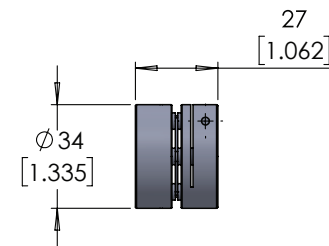


P.C.D. Ø70 [2.756]

4x M6 Threaded



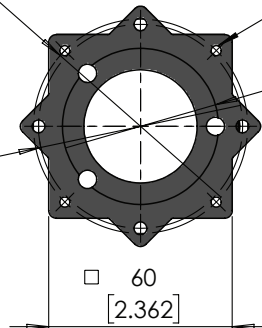
SFT-12-□□□□
12mm Shaft Variable Length



PML34-12-□□
12 mm Coupling with Variable Input

P.C.D. Ø66.67 [2.625]

8x M4 Threaded
or
8x M5 Threaded



UNITS: mm [inch]

Unless otherwise specified, tolerance to be: CNS 4018 IT 14 Linear measures
0.5-3 ±0.1
3-6 ±0.1
6-30 ±0.2
30-120 ±0.3
120-315 ±0.5

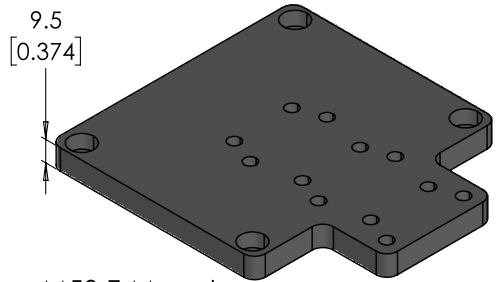
	NAME	DATE	DO NOT SCALE DRAWING	DIMENSIONS ARE METRIC
DRAWN	M.Reynolds	04-10-2018	TITLE:	M50-25 Options
CHECKED	M.Dank	04-10-2018		
ENG APPR.	M.Dank	04-10-2018		



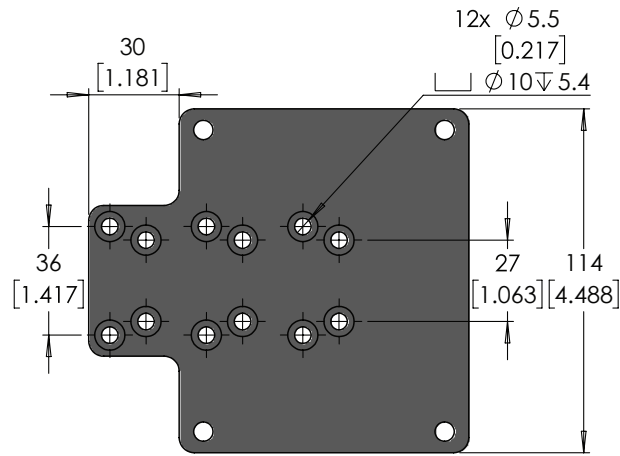
Myostat Motion Control Inc.
+1 905-856-4441
www.myostat.ca

PROPRIETARY AND CONFIDENTIAL
THE INFORMATION CONTAINED IN THIS
DRAWING IS THE SOLE PROPERTY OF
MYOSTAT MOTION CONTROL INC.
ANY REPRODUCTION IN PART OR AS A
WHOLE WITHOUT THE WRITTEN PERMISSION
OF Myostat Motion Control Inc.

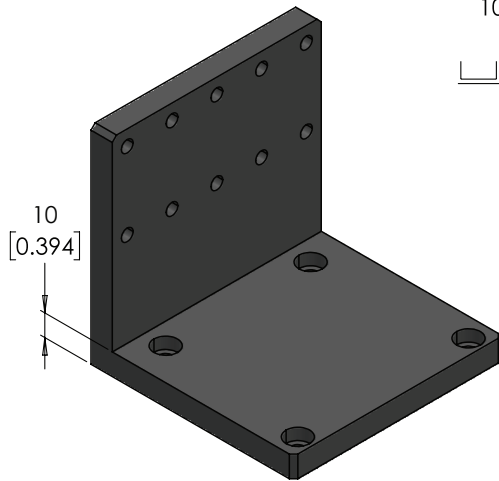
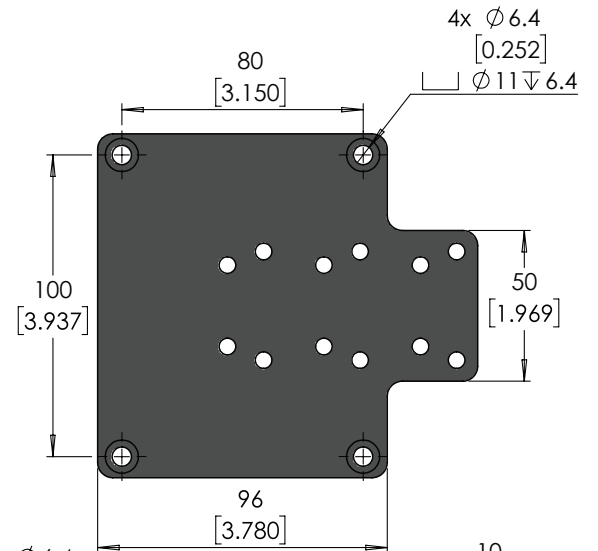
PRT. NO.	REV
M50-25-□-□-□□□□	2.2



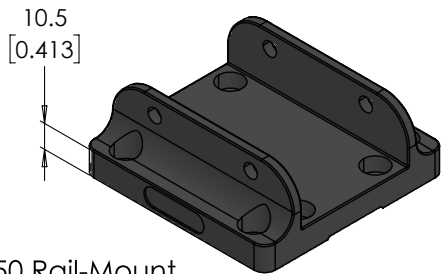
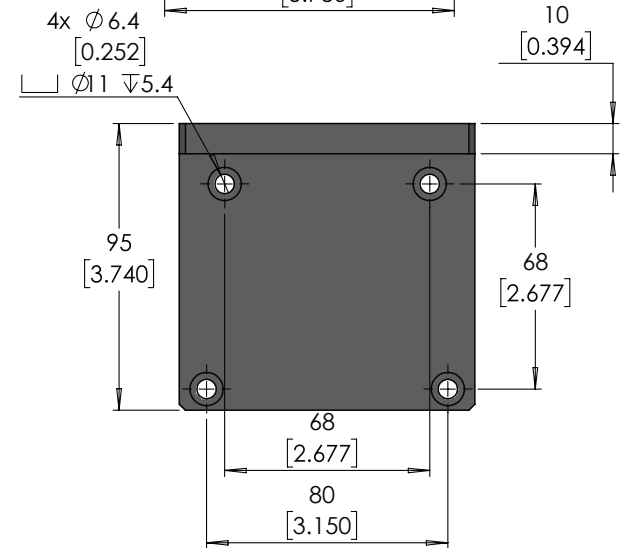
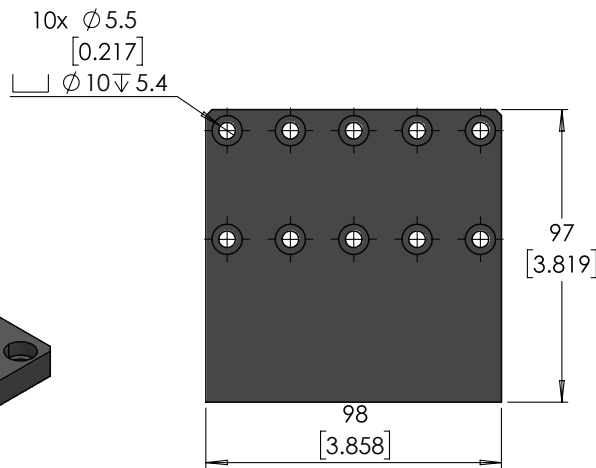
M50-T-Mount
2 Axis Mounting Bracket



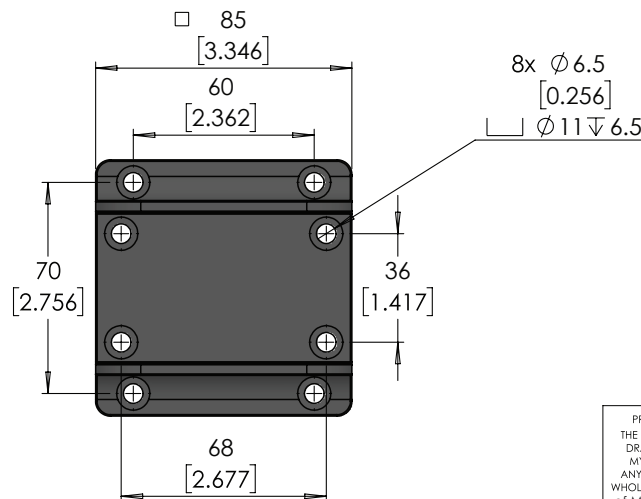
Offset holes allow for mounting of either M45 or M50




M50-RA-Mount
Right Angle Rail Mount



M50 Rail-Mount
M50 Rail Mount

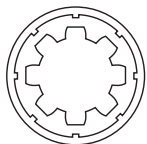


UNITS: mm [inch]

Unless otherwise specified, tolerance to be: CNS 4018 IT 14 Linear measures 0.5-3 ±0.1 3-6 ±0.1 6-30 ±0.2 30-120 ±0.3 120-315 ±0.5	DRAWN	M.Reynolds	04-10-2018	DO NOT SCALE DRAWING	DIMENSIONS ARE METRIC
	CHECKED	M.Dank	04-10-2018	TITLE: <h1>M50 Mounting Options</h1>	
ENG APPR.	M.Dank	04-10-2018	PRT. NO. M50-25-□-□-□□□□		
PROPRIETARY AND CONFIDENTIAL THE INFORMATION CONTAINED IN THIS DRAWING IS THE SOLE PROPERTY OF MYOSTAT MOTION CONTROL INC. ANY REPRODUCTION IN PART OR AS A WHOLE WITHOUT THE WRITTEN PERMISSION OF Myostat Motion Control Inc.			 Myostat Motion Control Inc. +1 905-856-4441 www.myostat.ca		REV 2.2

Belt Drive Actuators

M60-35 Series

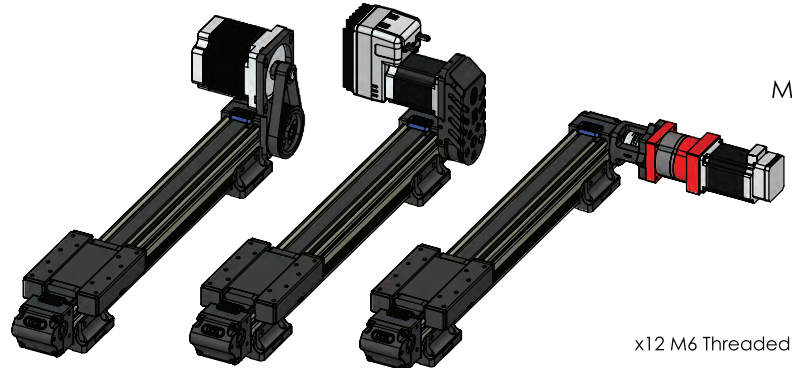
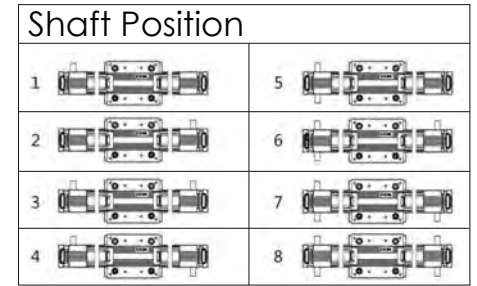
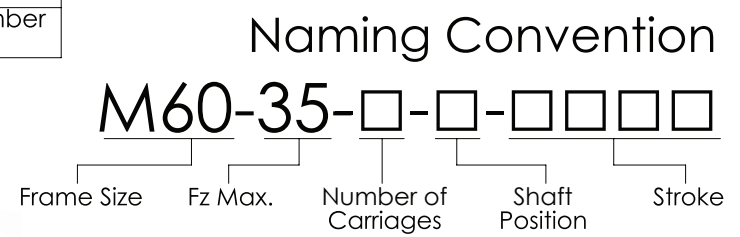
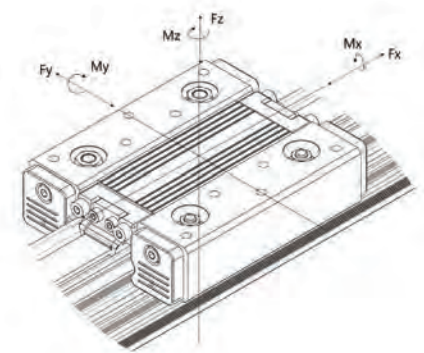


MYOSTAT MOTION CONTROL INC.

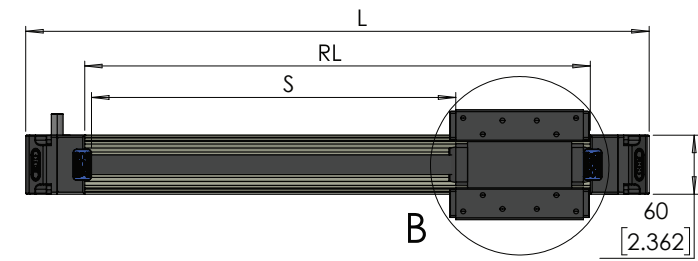
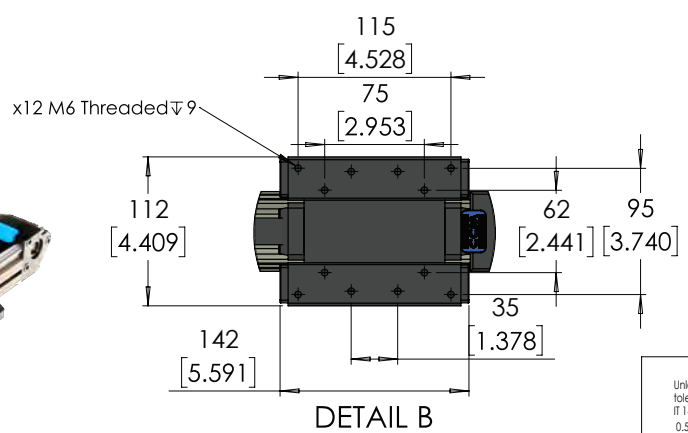
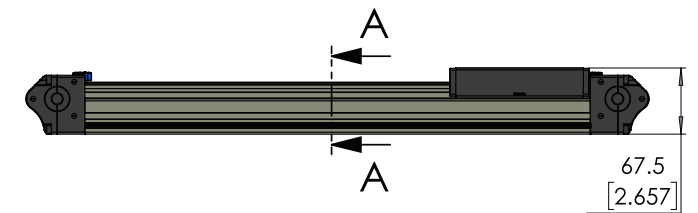
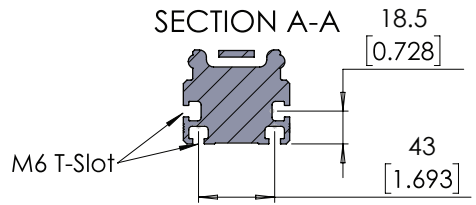
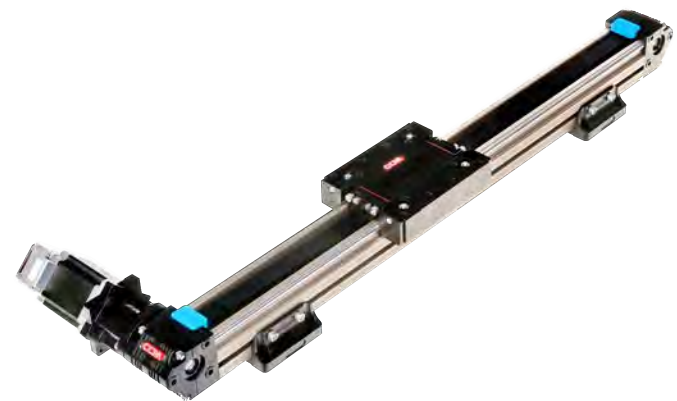
www.myostat.ca
info@myostat.ca
+1 905 836 4441

Technical Data				
	Unit		Value	
Max. Speed	m/s	ft/s	4	13.12
Max. Acceleration	m/s ²	ft/s ²	15	49.21
Nominal Input Torque	Nm	ft-lb	7	5.16
Positional Repeatability	+/- mm	+/- Inch	0.05	0.002
Pitch	mm	Inch	95	3.740
Belt Width			20	0.787
Toothed Belt	HTD3M			
Max. Belt Expansion	%		0.18	
Toothed Belt Tension	N	lbf	300	67.44
Fx Max.			350	78.68
Fy Max.			260	58.45
Fz Max.			350	78.68
Mx Max.	Nm	ft-lb	10	7.38
My (standard)			18	13.28
Mz (standard)			15	11.06
Mass for first meter	Kg	lb	4.65	10.23
Mass per additional meter			4.05	8.91

Variable Dimensions	
RL - Rail Length	350 - 3600 [13.780-141.732]
L - Overall Length	RL +127.5 [5.020]
S - Stroke	RL - (142 [5.591] x Number of Carriages)



Available with Inline Motor Mount, SX Gearbox and 23L20C, 2:1 Belt Reduction or 5:1 Belt Reduction



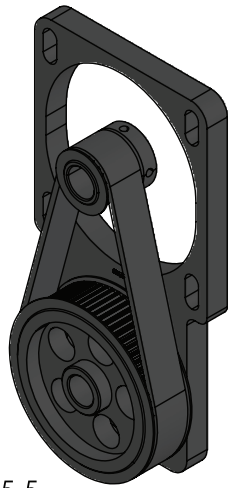
Unless otherwise specified, tolerance to be: CNS 4018 IT 14 Linear measures
0.5-3 ±0.1
3-6 ±0.1
6-30 ±0.2
30-120 ±0.3
120-315 ±0.5

PROPRIETARY AND CONFIDENTIAL THE INFORMATION CONTAINED IN THIS DRAWING IS THE SOLE PROPERTY OF MYOSTAT MOTION CONTROL INC. ANY REPRODUCTION IN PART OR AS A WHOLE WITHOUT THE WRITTEN PERMISSION OF Myostat Motion Control Inc.

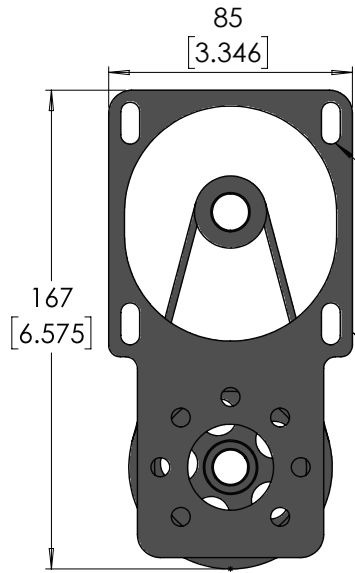
DRAWN	M.Reynolds	04-10-2018
CHECKED	M.Dank	04-10-2018
ENG APPR.	M.Dank	04-10-2018



DO NOT SCALE DRAWING		DIMENSIONS ARE METRIC	
TITLE: M60-35 Series Belt Driven Actuator			
PRT. NO. M60-35-□-□-□□□□		REV 2.2	



SR5-5
Belt Reduction Available in 5:1

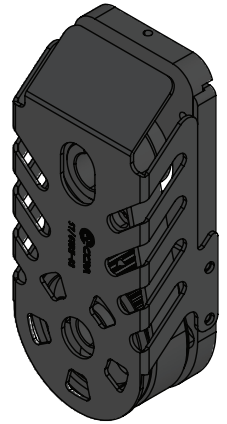
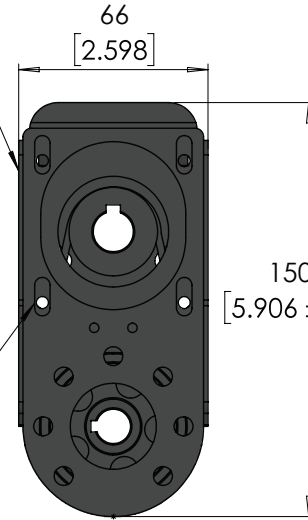


Accepts 60mm Servo Motor with 14mm shaft

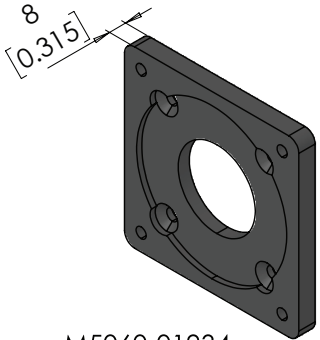
Slotted for Tensioning

Accepts NEMA 34 Motor with 1/2" shaft

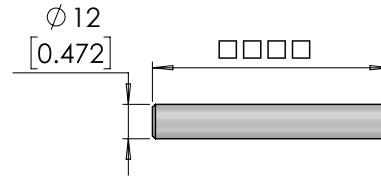
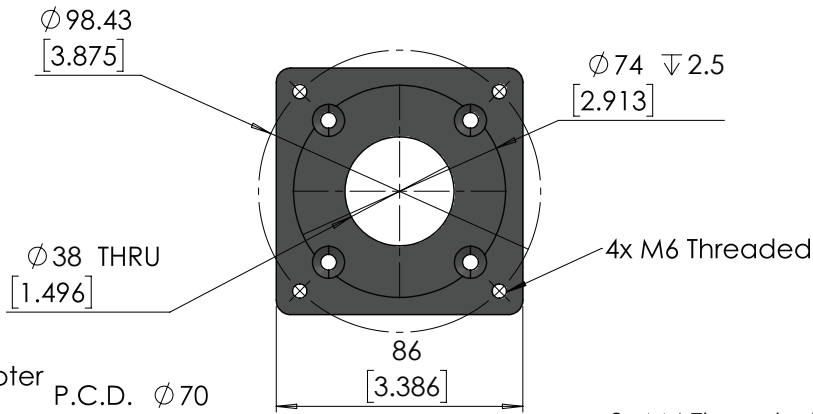
4x M5 Threaded



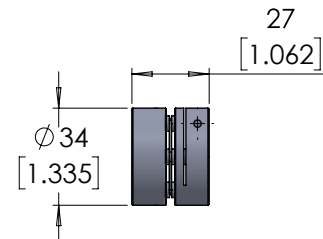
SR2-2
Belt Reduction Available in 2:1



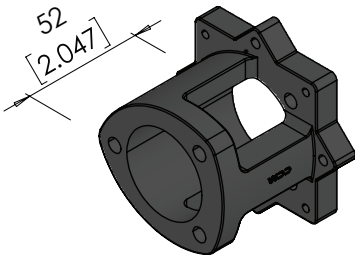
M5060-01934
34 Stepper Motor Adapter



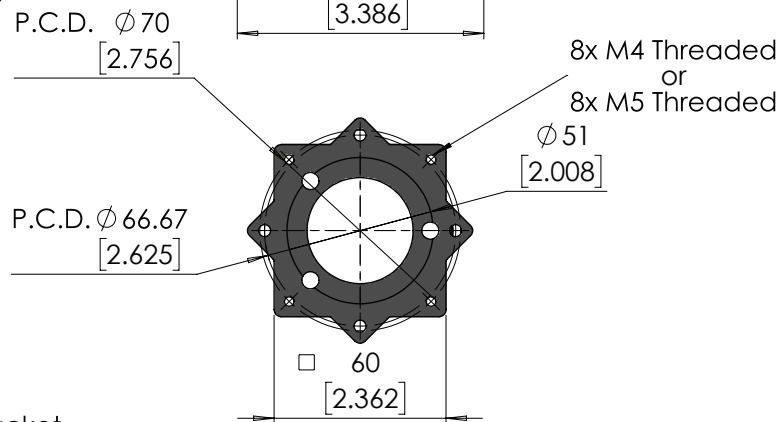
SFT-12-□□□□
12mm Shaft Variable Length



PML34-12-□□
12 mm Coupling with Variable Input



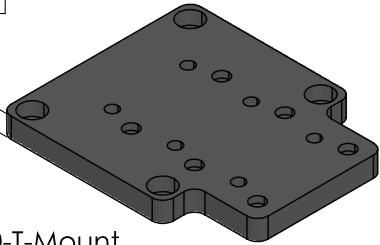
M5060-M23-M4
M5060-M23-M5
Nema 23 Inline Motor Bracket



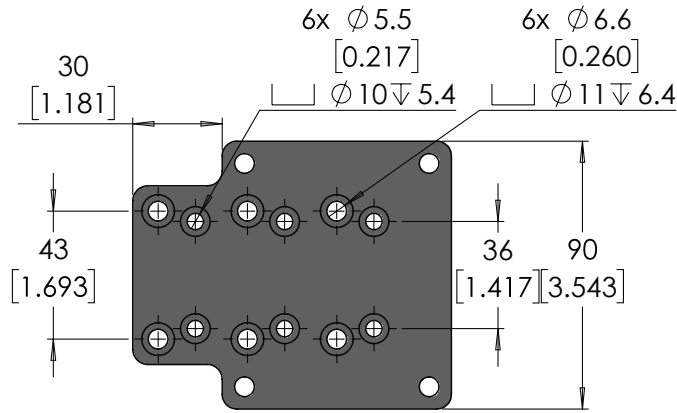
UNITS: mm [inch]

Unless otherwise specified, tolerance to be: CNS 4018 IT 14 Linear measures 0.5-3 ± 0.1 3-6 ± 0.1 6-30 ± 0.2 30-120 ± 0.3 120-315 ± 0.5	DRAWN	M.Reynolds	04-10-2018	DO NOT SCALE DRAWING	DIMENSIONS ARE METRIC
	CHECKED	M.Dank	04-10-2018		
	ENG APPR:	M.Dank	04-10-2018	TITLE: M60-35 Accessories	
 Myostat Motion Control Inc. +1 905-856-4441 www.myostat.ca				PRT. NO. M60-35-□-□-□□□□	
PROPRIETARY AND CONFIDENTIAL THE INFORMATION CONTAINED IN THIS DRAWING IS THE SOLE PROPERTY OF MYOSTAT MOTION CONTROL INC. ANY REPRODUCTION IN PART OR AS A WHOLE WITHOUT THE WRITTEN PERMISSION OF Myostat Motion Control Inc.				REV 2.2	

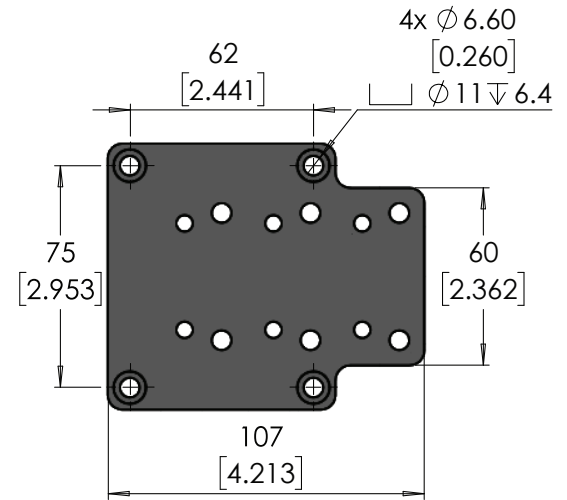
9.5
[0.374]



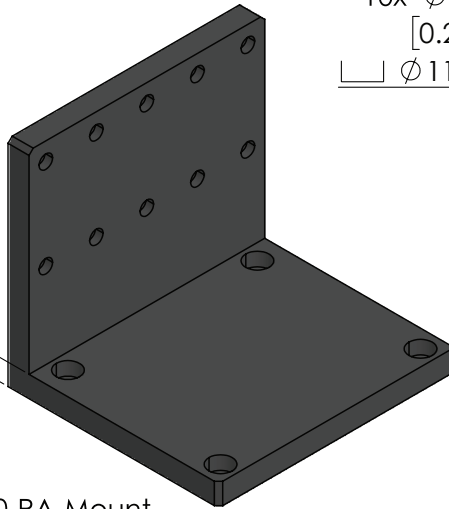
M60-T-Mount
2 Axis Mounting Bracket



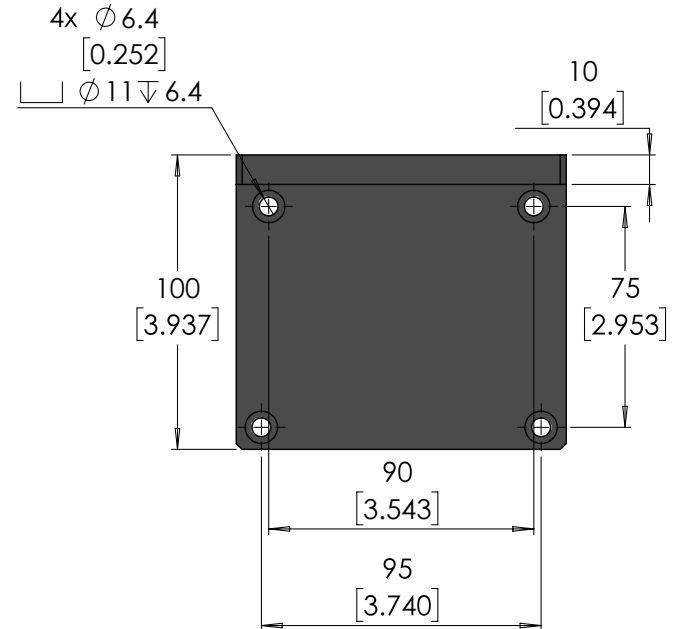
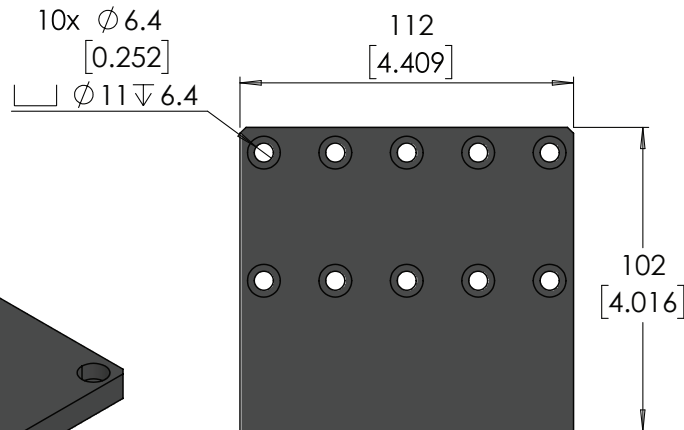
Offset holes allow for mounting of either M50 or M60



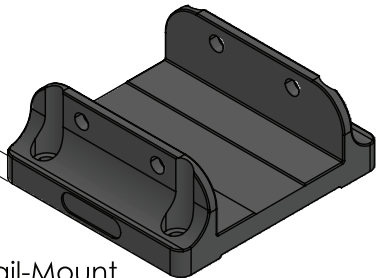
10
[0.394]



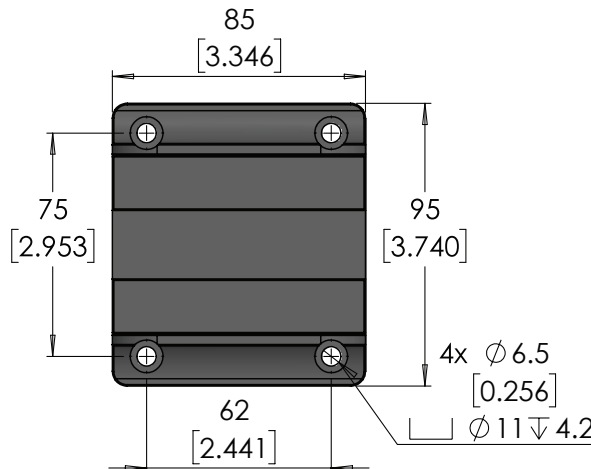
M60-RA-Mount
Right Angle Rail Mount




10
[0.394]



M60 Rail-Mount
M60 Rail Mount

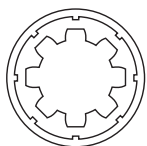


UNITS: mm [inch]

Unless otherwise specified, tolerance to be: CNS 4018 IT 14 Linear measures 0.5-3 ±0.1 3-6 ±0.1 6-30 ±0.2 30-120 ±0.3 120-315 ±0.5	DRAWN	M.Reynolds	04-10-2018	DO NOT SCALE DRAWING	DIMENSIONS ARE METRIC
	CHECKED	M.Dank	04-10-2018	TITLE: <h1>M60 Mounting Options</h1>	
ENG APPR.	M.Dank	04-10-2018	PRT. NO. M60-35-□-□-□□□□		
PROPRIETARY AND CONFIDENTIAL THE INFORMATION CONTAINED IN THIS DRAWING IS THE SOLE PROPERTY OF MYOSTAT MOTION CONTROL INC. ANY REPRODUCTION IN PART OR AS A WHOLE WITHOUT THE WRITTEN PERMISSION OF Myostat Motion Control Inc.			 Myostat Motion Control Inc. +1 905-856-4441 www.myostat.ca		REV 2.2

Belt Drive Actuators

H80 Series

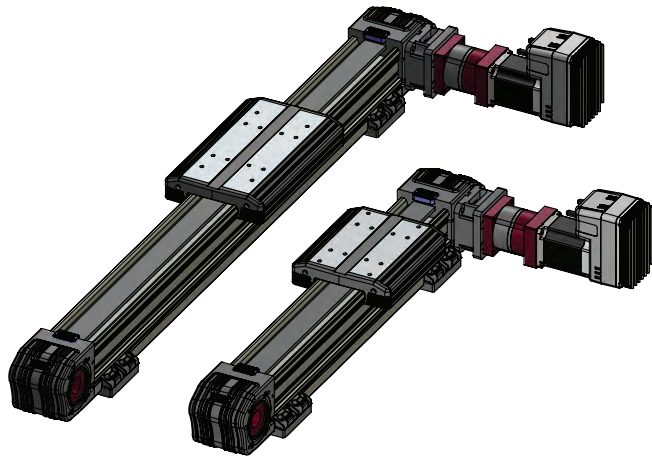
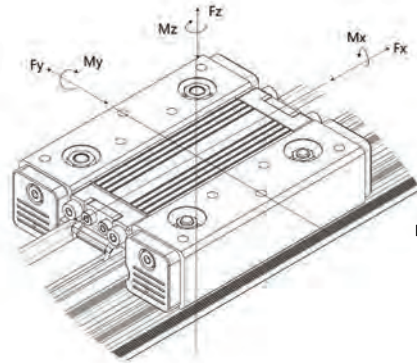
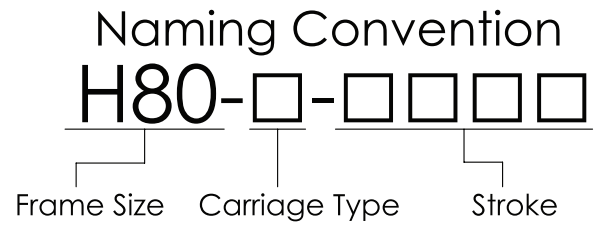


MYOSTAT MOTION CONTROL INC.

www.myostat.ca
info@myostat.ca
+1 905 836 4441

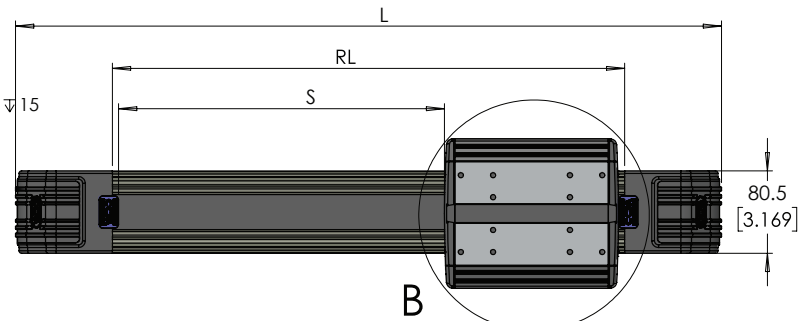
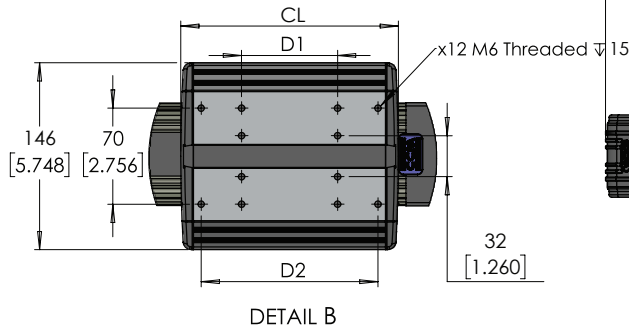
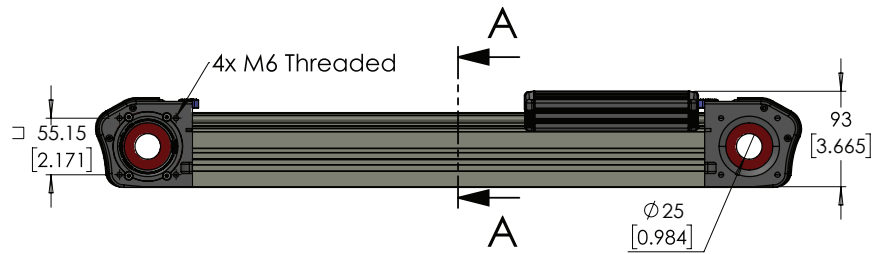
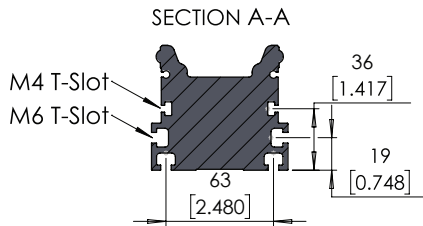
Technical Data		
	Unit	H80-L-□□□□ H80-S-□□□□
Max. Speed	m/s	6
Max. acceleration	m/s ²	20
Nominal Input Torque	Nm	10
Positional Repeatability	+/- mm	0.08
Pitch	mm	185
Belt Width	mm	33
Toothed Belt		K5M-33
Belt Expansion	%	0.18
Toothed Belt Tension		450
Fx Max.	N	700
Fy Max.		700
Fz Max.		560
Mx Max.	Nm	42
My Max.		47.6 71.4
Mz Max.		61.6 92.4
Mass for first meter		8.5
Mass per additional meter	KG	0.48


Variable Dimensions		
	H80 - S	H80 - L
RL - Rail Length	400-3700	
L - Overall Length	RL + 189	
S - Stroke	RL - CL	
CL - Carriage Length	170	240
D1 - Hole Dimension 1	70	87
D2 - Hole Dimension 2	133	151

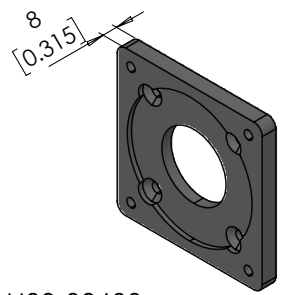


H80-L-□□□□ H80-S-□□□□

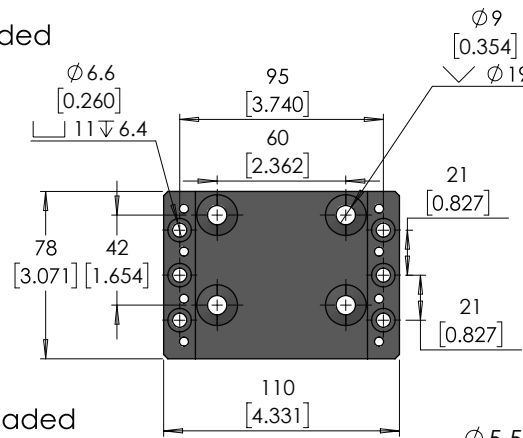
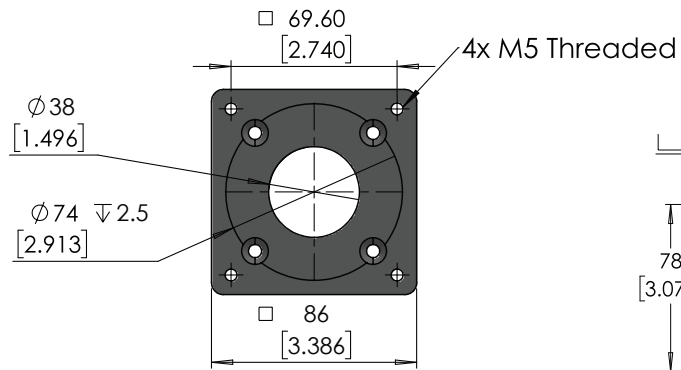
Long and Short Carriage variants are shown with Inline Motor Mount, SX Gearbox and CM2-60A40C Motor Available with direct drive or gearbox



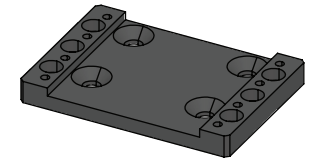
Unless otherwise specified, tolerance to be: CNS 4018 IT 14 Linear measures 0.5-3 ±0.1 3-6 ±0.1 6-30 ±0.2 30-120 ±0.3 120-315 ±0.5	DRAWN	M.Reynolds	04-10-2018	DO NOT SCALE DRAWING DIMENSIONS ARE METRIC TITLE: H80 Belt Driven Actuator
	CHECKED	M.Dank	04-10-2018	
	ENG APPR.	M.Dank	04-10-2018	
PROPRIETARY AND CONFIDENTIAL THE INFORMATION CONTAINED IN THIS DRAWING IS THE SOLE PROPERTY OF MYOSTAT MOTION CONTROL INC. ANY REPRODUCTION IN PART OR AS A WHOLE WITHOUT THE WRITTEN PERMISSION OF Myostat Motion Control Inc.	 Myostat Motion Control Inc. +1 905-856-4441 www.myostat.ca		PRT. NO.	REV
			H80-□-□□□□	2.1



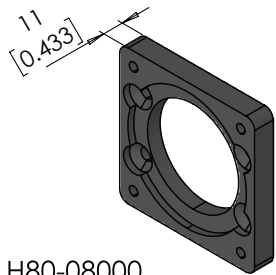
H80-08600
34 stepper Motor Adapter



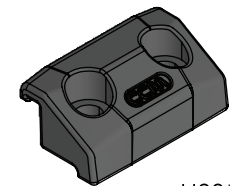
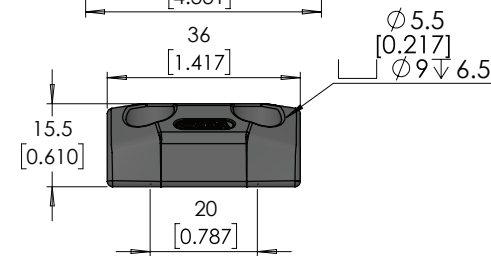
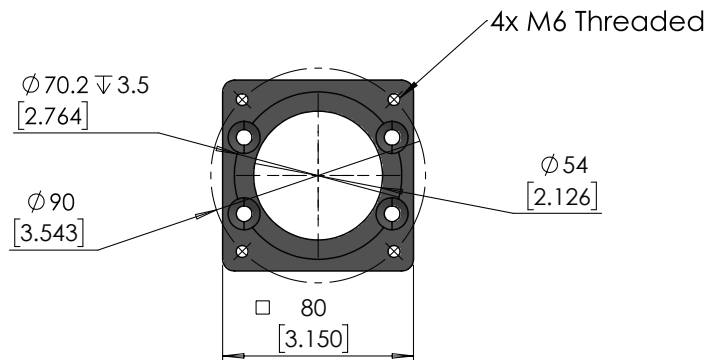
The H80 Mounting Kit includes:
1 H80-BKT
4 H80-FT



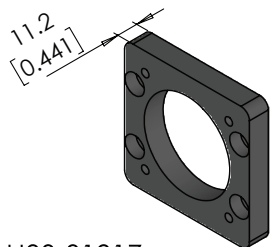
H80MK-BKT
Mounting Bracket



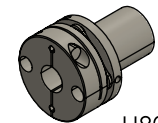
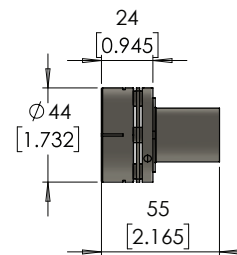
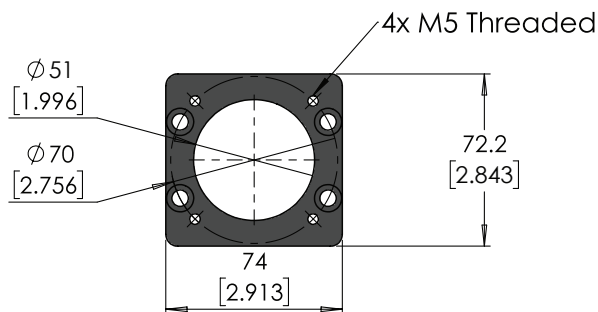
H80-08000
80mm Servo Motor Adapter



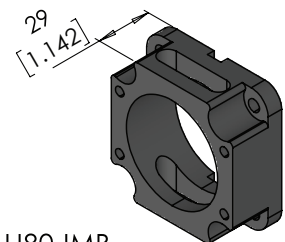
H80Mk-FT
Mounting Feet



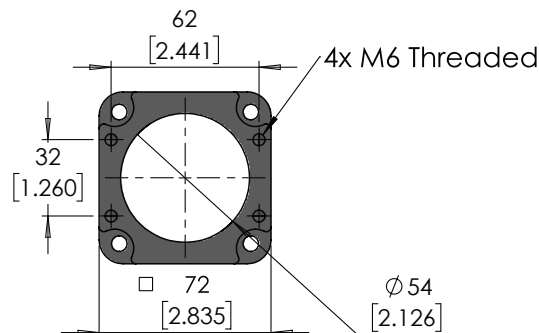
H80-01917
60 mm Servo Motor Adapter



H80-SC-□□
H80 Coupling




H80-IMB
H80 Inline Motor Bracket



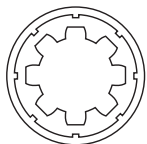
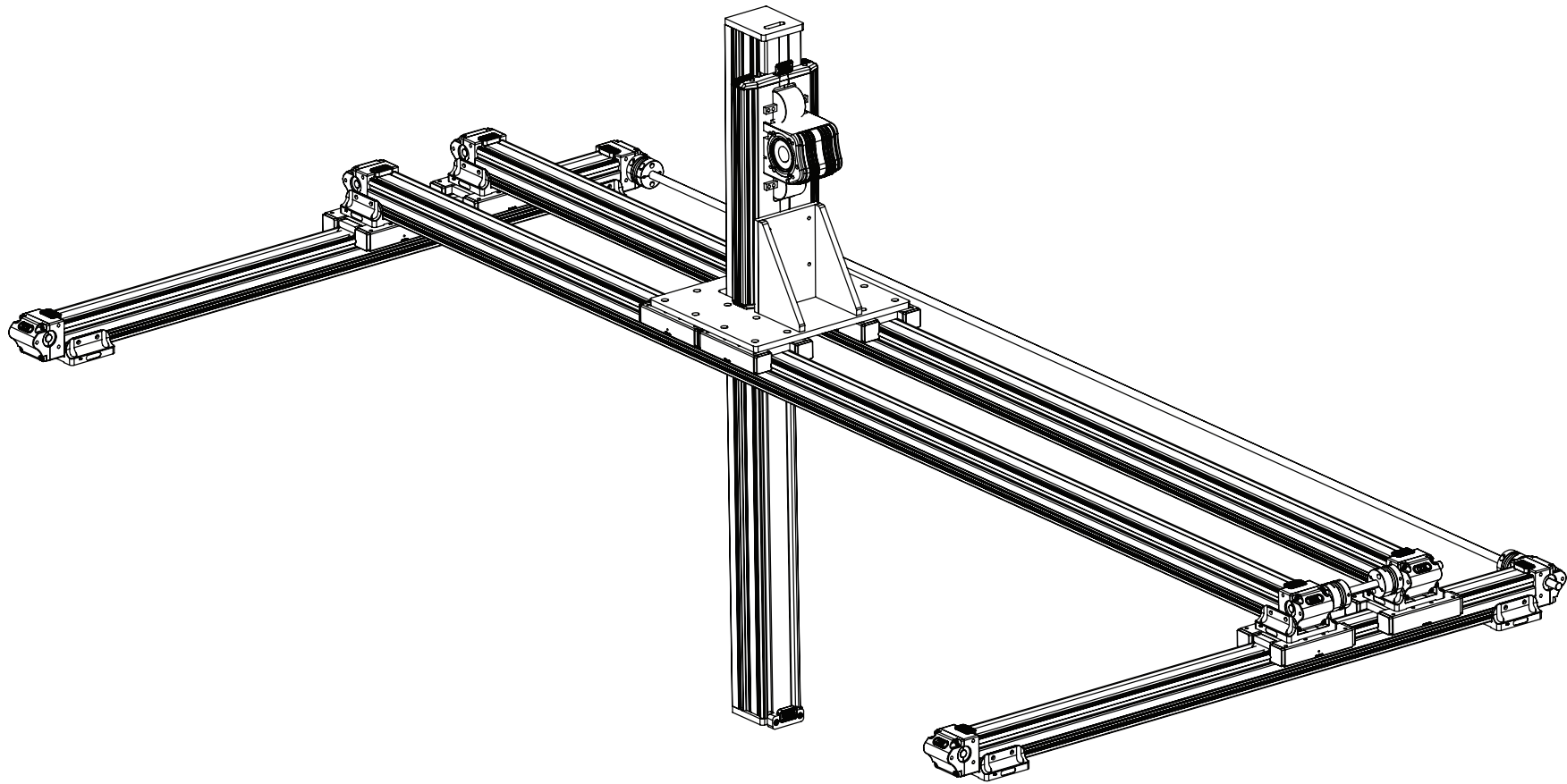
Part Number	Input Shaft Diameter
H80-SC-12.7	12.7
H80-SC-14	14
H80-SC-19	19
H80-SC-20	20

UNITS: mm [inch]

Unless otherwise specified, tolerance to be: CNS 4018 IT 14 Linear measures 0.5-3 ±0.1 3-6 ±0.1 6-30 ±0.2 30-120 ±0.3 120-315 ±0.5	NAME M.Reynolds	DATE 04-10-2018	DO NOT SCALE DRAWING	DIMENSIONS ARE METRIC
	DRAWN M.Reynolds	CHECKED M.Dank	DATE 04-10-2018	TITLE: <h1>H80 Accessories</h1>
	ENG APPR. M.Dank	DATE 04-10-2018	PRT. NO. H80-□-□□□□	
PROPRIETARY AND CONFIDENTIAL THE INFORMATION CONTAINED IN THIS DRAWING IS THE SOLE PROPERTY OF MYOSTAT MOTION CONTROL INC. ANY REPRODUCTION IN PART OR AS A WHOLE WITHOUT THE WRITTEN PERMISSION OF Myostat Motion Control Inc.		 Myostat Motion Control Inc. +1 905-856-4441 www.myostat.ca		

Belt Drive Actuators

H80-Z Series



MYOSTAT MOTION CONTROL INC.

www.myostat.ca
info@myostat.ca
+1 905 836 4441

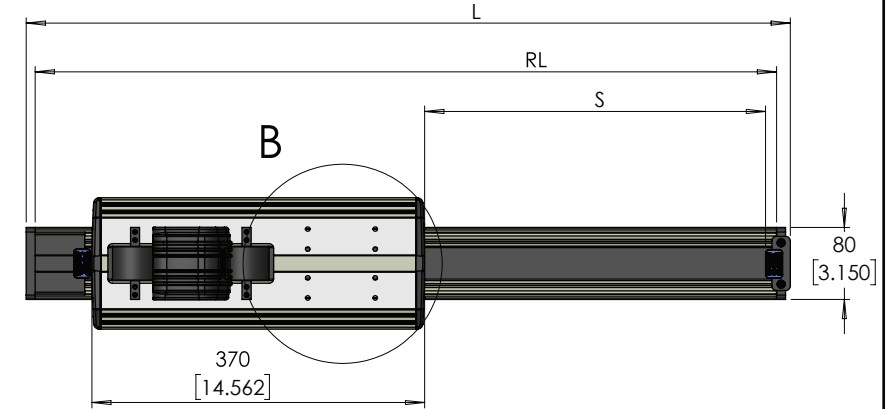
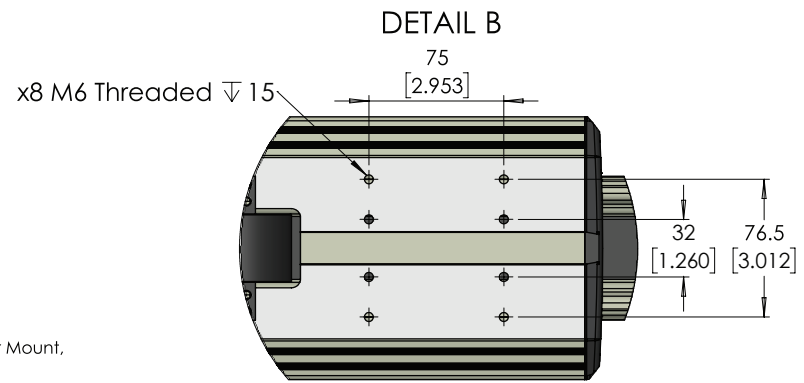
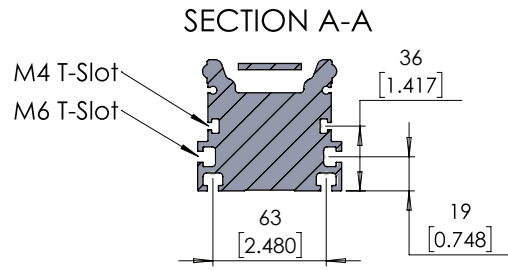
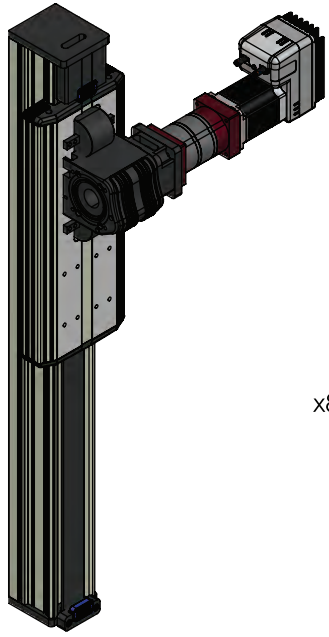
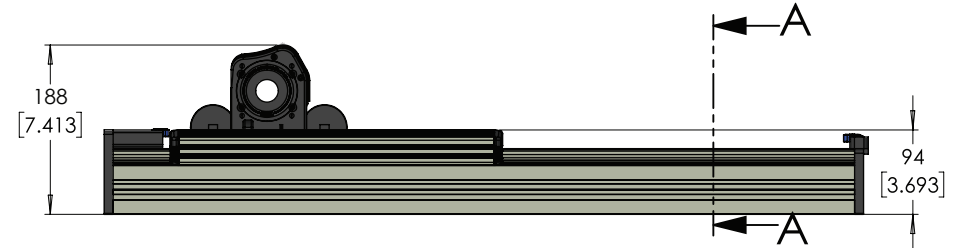
Technical Data		
	Unit	H80-Z-□□□□
Max Speed	m/s	4
Max acceleration	m/s ²	15
Torque	Nm	10
Positional Repeatability	+/- mm	0.08
Pitch	mm	185
Belt Width	mm	33
Toothed Belt	STD5M	
Belt Expansion	%	0.18
Toothed Belt Tension		450
Fx Max	N	
Fy Max		
Fz Max		
Mx Max	Nm	
My Max		
Mz Max		
First meter	KG	8.5
Continued meter per 100mm		0.48

Variable Dimensions	
RL - Rail Length	400-3700
L - Overall Length	RL + 25.25
S - Stroke	RL - 445


Naming Convention

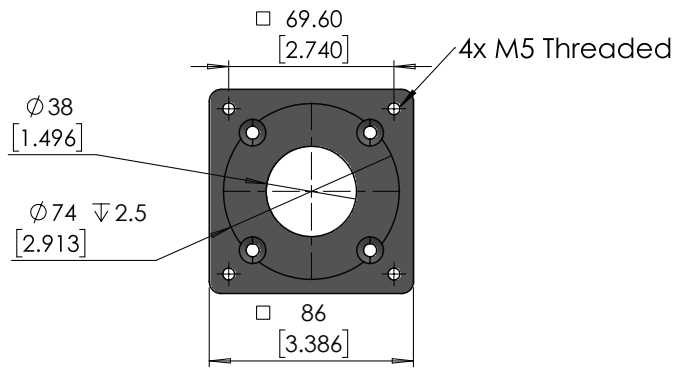
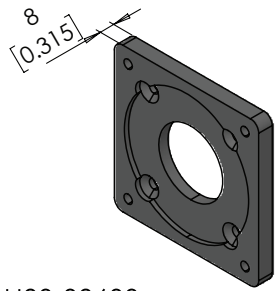
H80-Z-□□□□

Frame Size Carriage Type Stroke

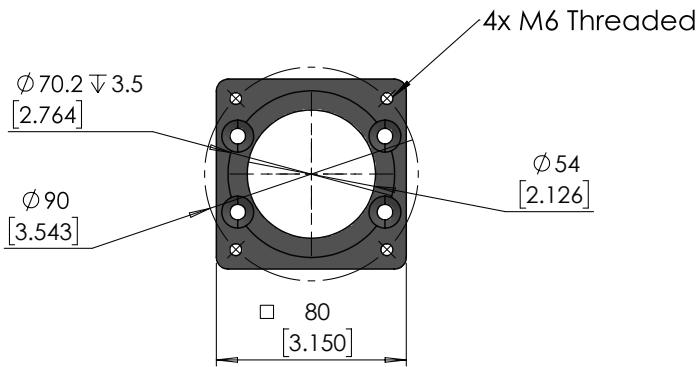
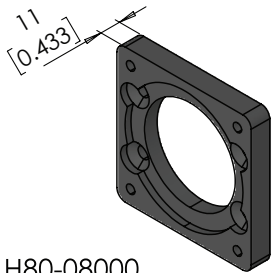


Cantilever type Carriage shown with Inline Motor Mount, SX Gearbox and CM2-60A40C Motor Available with direct drive or gearbox

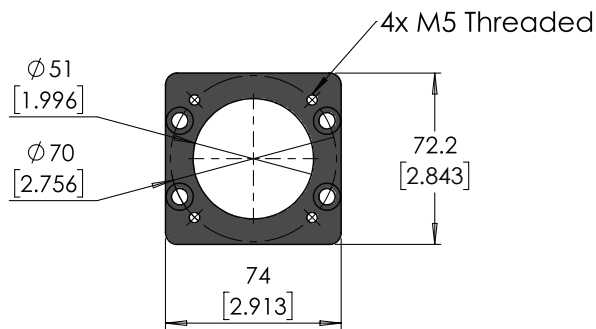
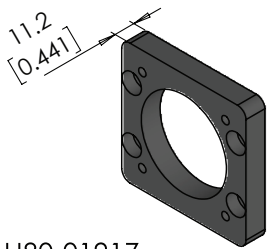
Unless otherwise specified, tolerance to be: CNS 4018 IT 14 Linear measures 0.5-3 ±0.1 3-6 ±0.1 6-30 ±0.2 30-120 ±0.3 120-315 ±0.5	DRAWN	M.Reynolds	04-10-2018	DO NOT SCALE DRAWING	DIMENSIONS ARE METRIC
	CHECKED	M.Dank	04-10-2018	TITLE: H80 Cantilever Belt Driven Actuator	
	ENG APPR:	M.Dank	04-10-2018		
PROPRIETARY AND CONFIDENTIAL THE INFORMATION CONTAINED IN THIS DRAWING IS THE SOLE PROPERTY OF MYOSTAT MOTION CONTROL INC. ANY REPRODUCTION IN PART OR AS A WHOLE WITHOUT THE WRITTEN PERMISSION OF Myostat Motion Control Inc.		 Myostat Motion Control Inc. +1 905-856-4441 www.myostat.ca		PRT. NO.	REV
				H80-Z-□□□□	2.1



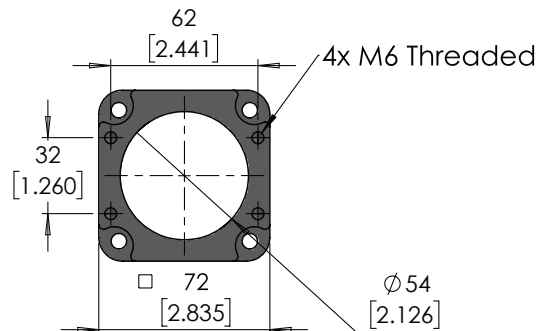
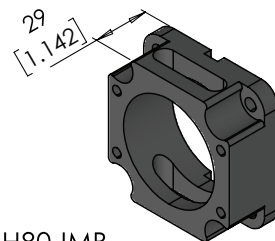
H80-08600
34 stepper Motor Adapter



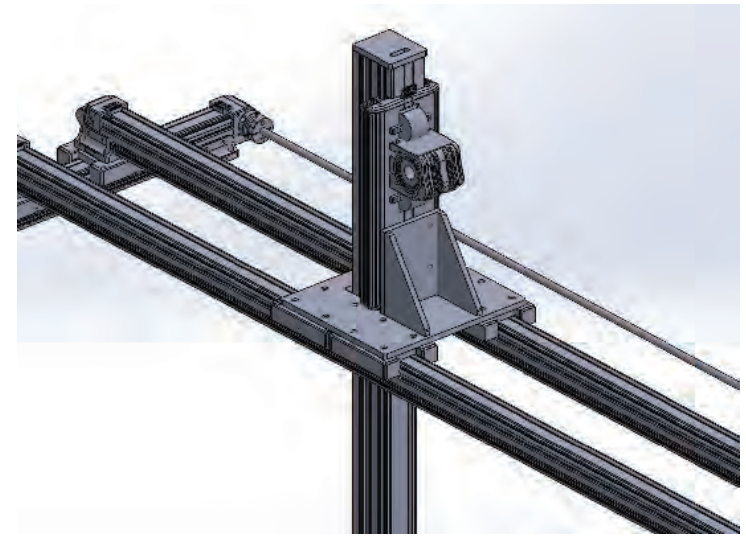
H80-08000
80mm Servo Motor Adapter



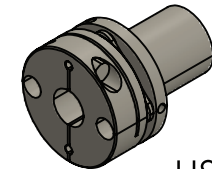
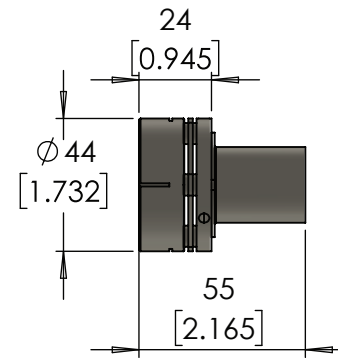
H80-01917
60 mm Servo Motor Adapter



H80-IMB
H80 Inline Motor Bracket




Representitive Assembly



H80-SC-□□
H80 Coupling

Part Number	Input Shaft Diameter
H80-SC-12.7	12.7
H80-SC-14	14
H80-SC-19	19
H80-SC-20	20

UNITS: mm [inch]

Unless otherwise specified, tolerance to be: CNS 4018 IT 14 Linear measures 0.5-3 ±0.1 3-6 ±0.1 6-30 ±0.2 30-120 ±0.3 120-315 ±0.5	DRAWN	M.Reynolds	04-10-2018	DO NOT SCALE DRAWING DIMENSIONS ARE METRIC TITLE: <h1>H80-Z Accessories</h1>
	CHECKED	M.Dank	04-10-2018	
	ENG APPR.	M.Dank	04-10-2018	
PROPRIETARY AND CONFIDENTIAL THE INFORMATION CONTAINED IN THIS DRAWING IS THE SOLE PROPERTY OF MYOSTAT MOTION CONTROL INC. ANY REPRODUCTION IN PART OR AS A WHOLE WITHOUT THE WRITTEN PERMISSION OF Myostat Motion Control Inc.		 Myostat Motion Control Inc. +1 905-856-4441 www.myostat.ca		PRT. NO. REV 2.1

Pre-Configured Gantry Styles

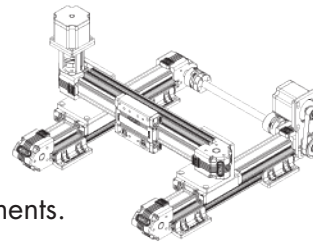
Please reference the gantry style number, along with required strokes and motors or motor mounts. Additional modifications or customization are available.

Gantries can be supplied with or without cable tracks and cabling.

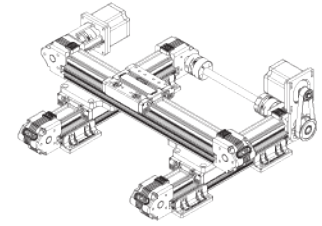
Some configurations are limited to specific frame sizes.

Our engineers can help pick the right combination based on your load and speed requirements.

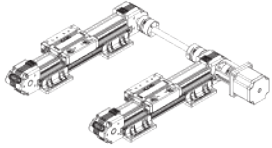
1



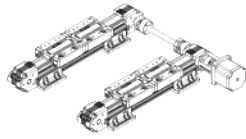
2



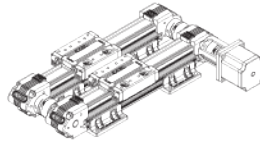
3



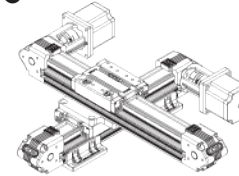
4



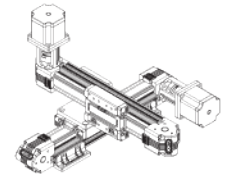
5



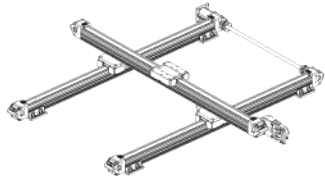
6



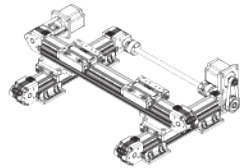
7



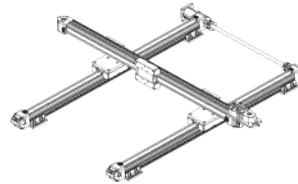
8



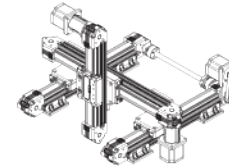
9



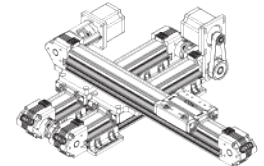
10



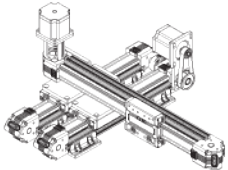
11



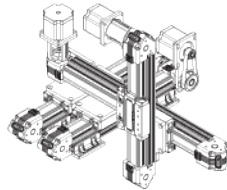
12



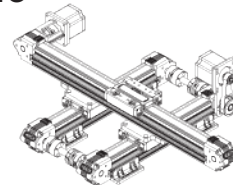
13



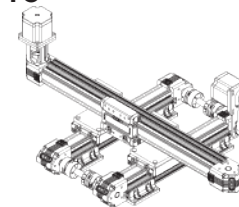
14



15



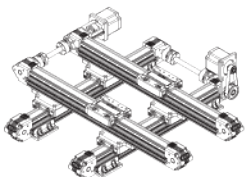
16



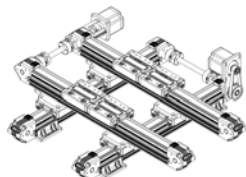
17



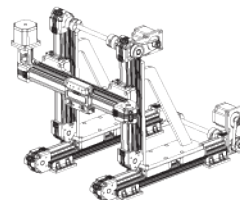
18



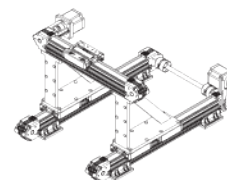
19



20



21



22

